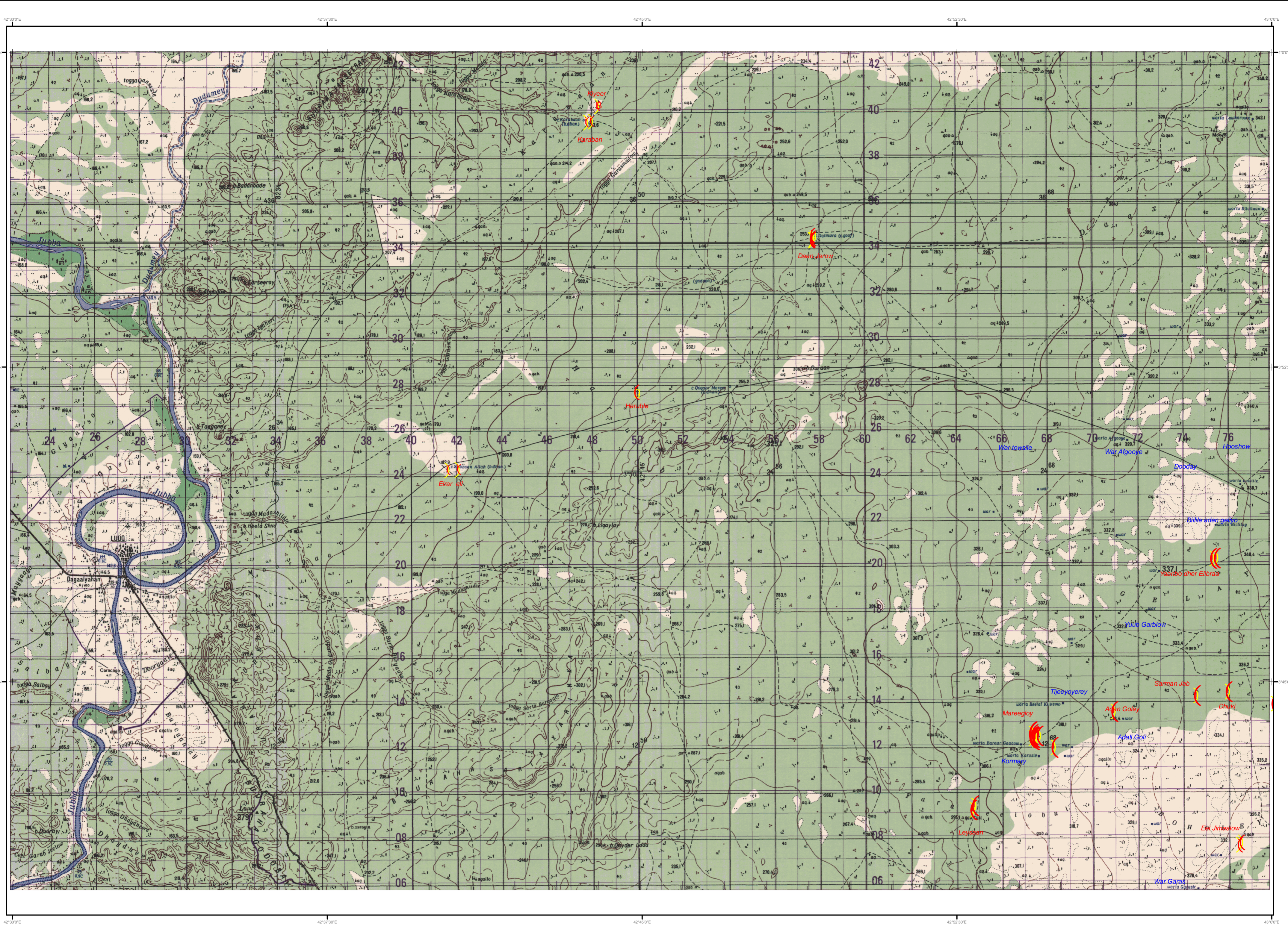


WATER SOURCES MAP



Map produced by stereo photography using aerial photography 1974. Printed 1976 by Bureau of Cartography, Ministry of Defence, Somalia Democratic Republic.

Reprinted by Canadian Forces Mapping and Charting Establishment from topographic material of native Somalia mapping by the British Director General of Military Survey.

Printed by DMA/NTC 1-93

Prepared and published by the Defense Mapping Agency Hydrographic/Topographic Center, Bethesda, MD

Map information as of 1952

LEGEND

- Shrub area
- Building
- All-weather hard surface road
- All-weather loose surface road
- Fair-weather road, track, coast
- Fence
- Landmark: Natural Tank
- Landmark: Well
- Shoreline

Scale 1:100 000

Scale 1:100 000
1 2 3 4 5 Miles
1 2 3 4 5 Kilometers

CONTOUR INTERVAL 20 METRES
EQUIDISTANCE DES COURBES 20 METRES

Blue numbered lines indicate the 1000 metres Universal Transverse Mercator (UTM) grid. World Geodetic System 1984 datum WGS 84. Zone changes occur at latitude 0° North and longitude 48° East.

Le quadrillage de 1000 mètres imprimé en bleu est du type Transverse Universel de Mercator basé sur le système de référence géodésique mondial 1984 (WGS 84). Les changements de zones sont à la latitude 0° Nord et longitude 48° Est.

Carte produite par moyen stéréophotogrammétrique utilisant les photographies aériennes 1974. Imprimée en 1976 par le Bureau de cartographie, Ministère de la Défense, République Démocratique Somalie.

Réimprimée par les Forces Canadiennes Service de Cartographie à partir de matériaux de reprographie fournis par le Directeur Général de Levé topographique militaire du Royaume-Uni.

Carroll points - Pointe de corail	Geological survey trace - Levé géologique	Contour lines - Lignes de niveau	Barren soil - Sol stérile
Brick building - Bâtiement en briques	Intermittent water - Eau intermittente	Cutting (for water) - Défilé (pour l'eau)	Boundary - Limite
Carton grass road - Route en carton	Pipeline - Pipeline	Well - Puits	Towns - Villes
Mosque - Mosquée	Water container - Conteneur d'eau	Wind generator - Éolienne	MUQDISHO - Capitale nationale
Porol station - Dépôt de porol	Water measuring station - Station de mesure d'eau	Wind measuring station - Station de mesure d'éolien	HARGEYSA - Capitale régionale
Well - Puits	Water tank - Réservoir d'eau	Water container - Conteneur d'eau	JIRIBAN - Capitale de district
Water container - Conteneur d'eau	Water container - Conteneur d'eau	Water container - Conteneur d'eau	AFGOOYE - 10 000-50 000 habitants
Water container - Conteneur d'eau	Water container - Conteneur d'eau	Water container - Conteneur d'eau	CEEL AFWEYNE - 2 000-10 000 habitants
Water container - Conteneur d'eau	Water container - Conteneur d'eau	Water container - Conteneur d'eau	TALEX - Jusqu'à 2 000 habitants
Water container - Conteneur d'eau	Water container - Conteneur d'eau	Water container - Conteneur d'eau	LAANTUBUN - Camp de travail
Water container - Conteneur d'eau	Water container - Conteneur d'eau	Water container - Conteneur d'eau	YAH - 4/75

TOWNS - VILLES

- MUQDISHO** - Capitale nationale
- HARGEYSA** - Capitale régionale
- JIRIBAN** - Capitale de district
- AFGOOYE** - 10 000-50 000 habitants
- CEEL AFWEYNE** - 2 000-10 000 habitants
- TALEX** - Jusqu'à 2 000 habitants
- LAANTUBUN** - Camp de travail
- YAH** - 4/75

BOHOL, SOMALIA NB-38-81 Y630 EDITION 2-DMA

HERE SHOULD BE CORRECTING FOOTNOTES AND COMMENTS FOR IMPROVING THIS PRODUCT TO DIRECTOR, DEFENSE MAPPING AGENCY, 4700 10th AVENUE, WASHINGTON, DC 20315-5102

© COPYRIGHT 1993 BY THE UNITED STATES GOVERNMENT. NO COPYRIGHT CLAIMED UNDER TITLE 17, U.S.C.

REPRODUCED IN FULL BY THE DEFENSE MAPPING AGENCY IN COOPERATION WITH THE CANADIAN FORCES MAPPING AND CHARTING ESTABLISHMENT.

REPRODUCED IN FULL BY THE DEFENSE MAPPING AGENCY IN COOPERATION WITH THE CANADIAN FORCES MAPPING AND CHARTING ESTABLISHMENT.

Water Sources Legend

EC (μ mhos)	DUG WELLS	DAMS
g No data	Functioning	Functioning
Fresh	g No data	g No data
Brackish	= Abandoned	D No
	B No	i Yes
Saline	i Yes	Capacity (m ³)
		<4.5 (25%)
	<6.5 (50%)	
	<9.5 (75%)	
	<27 (max)	
	>3500 (25%)	
	>6500 (50%)	
	>12000 (75%)	
	>57000 (max)	

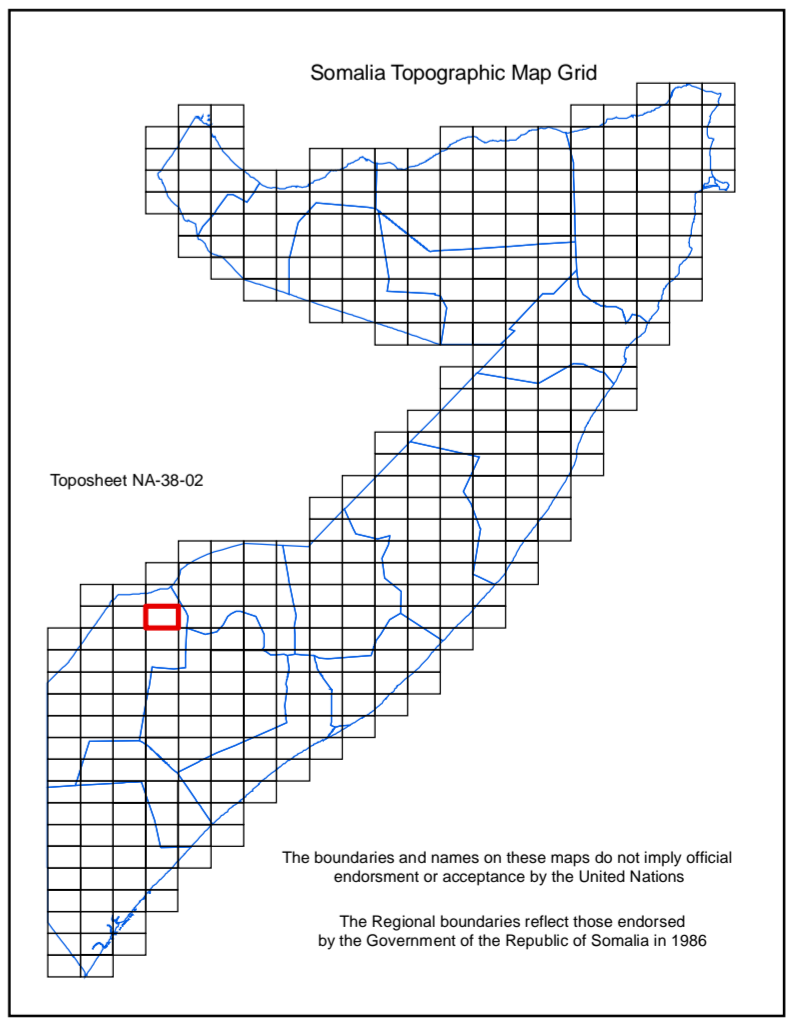
* Second value indicates percentile ranges

Data Sources: FAO SWALIM Water Sources Database ACF Water Sources Survey

1:100,000 scale Topographic Map image NA-38-02



SWALIM is funded by the European Commission with 5% co-funding provided by UNICEF



Map Reference: WAT-WATER-2006/017-NA3802-A1-001
For copies or digital data contact enquiries@fao-swalim.org