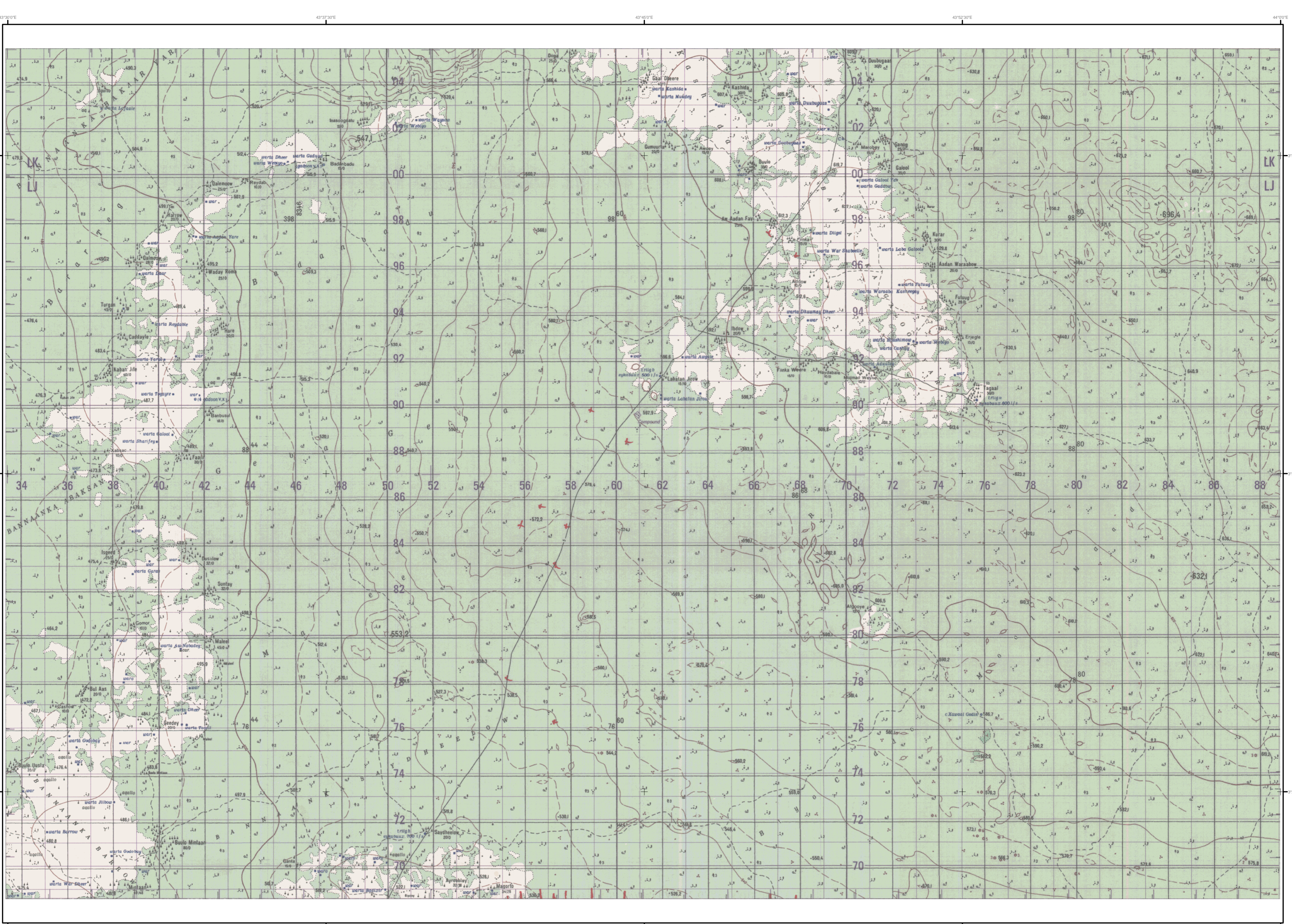


WATER SOURCES MAP



Map produced by stereo photography using aerial photography 1974. Printed 1978 by Bureau of Cartography, Ministry of Defence, Somalia Democratic Republic.

Reprinted by Canadian Forces Mapping and Charting Establishment from topographic material of native Somalia mapping by the British Director General of Military Survey.

Printed by DMAHTC 1-93.

Prepared and published by the Defense Mapping Agency Hydrographic/Topographic Center, Bethesda, MD

Map information as of 1992

Scale 1:100,000

CONTOUR INTERVAL 20 METRES
EQUIDISTANCE DES COURBES 20 METRES

Le quadrillage de 1000 mètres imprimé en bleu est du type Transverse Universel de Mercator basé sur le système de référence géodésique mondial 1958 (WGS 84). Les changements de zones sont à la latitude 0° Nord et longitude 48° Est.

Carte produite par moyen stéréophotogrammétrique utilisant des photographies aériennes 1974. Imprimée en 1978 par le Bureau de cartographie, Ministère de la Défense, République Démocratique Somalienne.

Réimprimée par les Forces Canadiennes Service de Cartographie à partir de matériaux de topographie fournis par le Directeur Général de Levé topographique militaire du Royaume-Uni.

Legend:

- Contour points - Point de cote
- Contour lines - Lignes de cote
- Contour interval - Intervalle des courbes
- Geological survey trace - Levé géologique
- Geological symbols - Symboles géologiques
- Geological survey trace - Levé géologique
- Geological symbols - Symboles géologiques
- Contour points - Point de cote
- Contour lines - Lignes de cote
- Contour interval - Intervalle des courbes
- Geological survey trace - Levé géologique
- Geological symbols - Symboles géologiques
- Contour points - Point de cote
- Contour lines - Lignes de cote
- Contour interval - Intervalle des courbes
- Geological survey trace - Levé géologique
- Geological symbols - Symboles géologiques

TOWNS - VILLES

- MUQDISHO - Country capital - Capitale nationale
- HARGEYSA - Regional capital - Capitale régionale
- JIRRIBAN - District capital - Capitale de district
- Villages - Villages
- AFGOOYE - 10 000-50 000 people/habitants
- CEEL AFWEYNE - 2 000-10 000 people/habitants
- TALEER - Up to 2 000 people/habitants
- LAANYAARU - Labour camp/Camp de travail
- Kaah - All buildings/Romaic houses

BOHOL, SOMALIA NB-38-81 Y630 EDITION 2-DMA

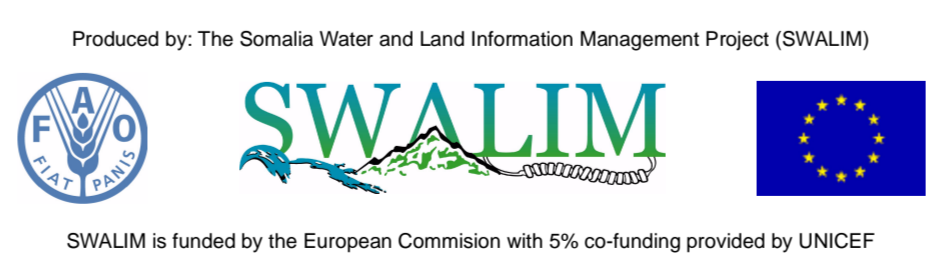
Water Sources Legend

EC (µ mhos)	DUG WELLS	DAMS
g No Data	g No data	g No data
Fresh	g Abandoned	D No
Brackish	B No	i Yes
Saline	i Yes	
	DEPTH (m)*	Capacity (m³)*
	<4.5 (25%)	>3500 (25%)
	<6.5 (50%)	>6500 (50%)
	<9.5 (75%)	>12000 (75%)
	<27 (max)	>57000 (max)

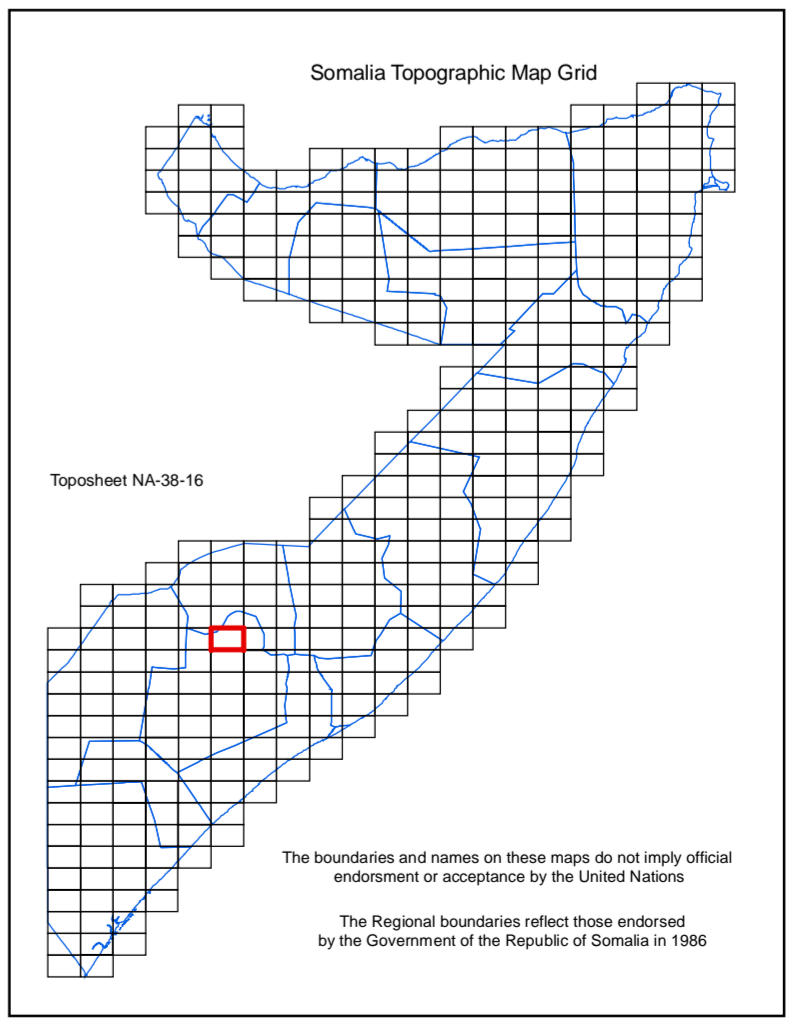
* Second value indicates percentile ranges

Data Sources: FAO SWALIM Water Sources Database
ACF Water Sources Survey

1:100,000 scale Topographic Map image NA-38-16



SWALIM is funded by the European Commission with 5% co-funding provided by UNICEF



The boundaries and names on these maps do not imply official endorsement or acceptance by the United Nations. The regional boundaries reflect those endorsed by the Government of the Republic of Somalia in 1986.

Map Reference: WAT-WATER-2006/017-NA3816-A1-001
For copies or digital data contact enquiries@fswalim.org