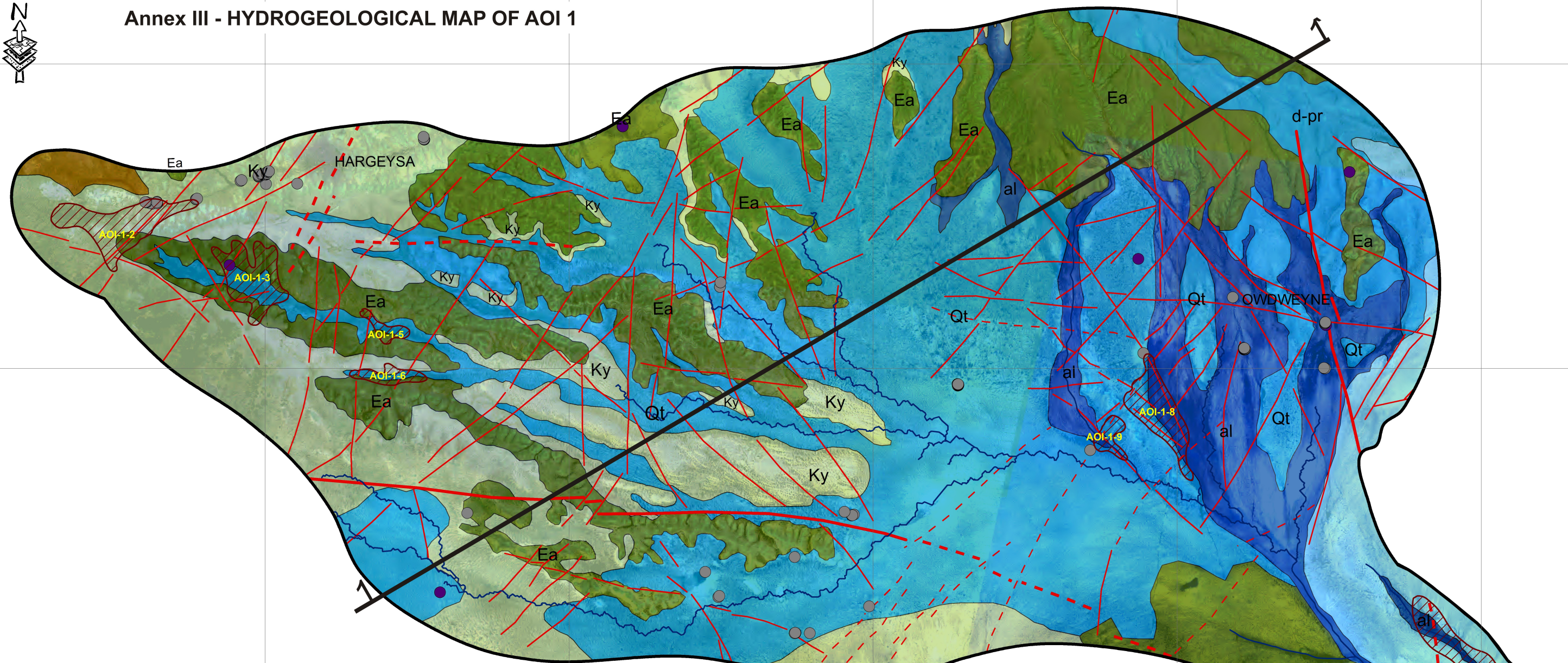


Annex III - HYDROGEOLOGICAL MAP OF AOI 1



- Legend**
- Promising Area
 - Drilled well
 - Dug well
 - Spring
 - Drainage network
 - Faults**
 - Certain, Local
 - Approximated, local
 - Certain, regional
 - Approximated, regional

Legend of Aquifer Type

General Aquifer Type	Aqifer ID	Aquifer type	Color
KARSTIC AQUIFER	K1	Karstic aquifer of high permeability	
	K2	Karstic aquifer of moderate to high permeability	
	KF	Complex aquifer - karstified to fissured rocks	
FISSURED AQUIFER	F	Fissured aquifer, well fractured and permeable rocks	
INTERGRANULAR AQUIFER	I1	Intergranular aquifer of high permeability	
	I2	Intergranular aquifer of moderate permeability	
	I3	Intergranular aquifer of low permeability	
AQUITARD TO AQUICLUDE	A	Aquifer of low permeability to completely impermeable rocks	
NON AQUIFER	N	Non-permeable rocks, hydrogeological barrier	

- Legend of Litho-Stratigraphical Units**
- al** Alluvial sediments, deposited along toggas and temporary streams
 - d-pr** Deluvial-proluvial sediments deposited at the foothills, and basins slopes often create of large thick blanket of unsorted heterogeneous material.
 - Qt** "Tigers" pattern mostly present in water logging areas ponds and zones with elevated humidity. A rare vegetation usually accompanies this formation
 - Ea** Auradu limestones: limestones with corals and intercalations of marls and cherts
 - Ky** Yesomma (Nubian) sandstones: Continental facies - variegated quartzose sandstones and siltstones, mainly fluvial. Near Ceerigaabo marine calcareous intercalations.

Surface of promising areas of Area of Interest 1.

ID Promising Area	Surface of area in km ²
AOI-1-2	59.6
AOI-1-3	49.9
AOI-1-5	8.7
AOI-1-6	13.4
AOI-1-8	47.1
AOI-1-9	11.6
AOI-1-10	72.4
AOI-1-11	86.8

