

## Flood advisory for Juba Shabelle Rivers!

Issued: 08 May 2020

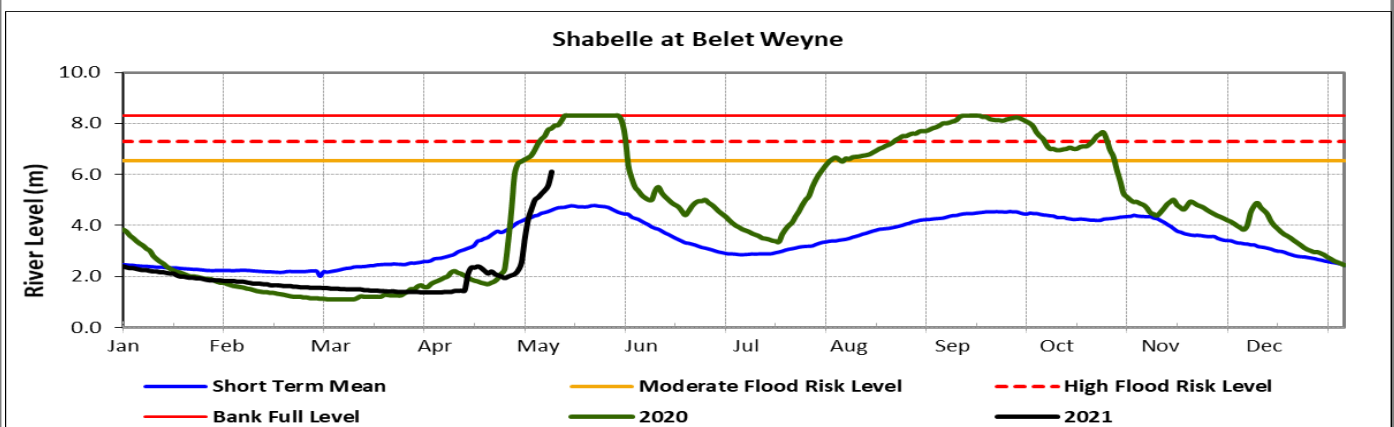
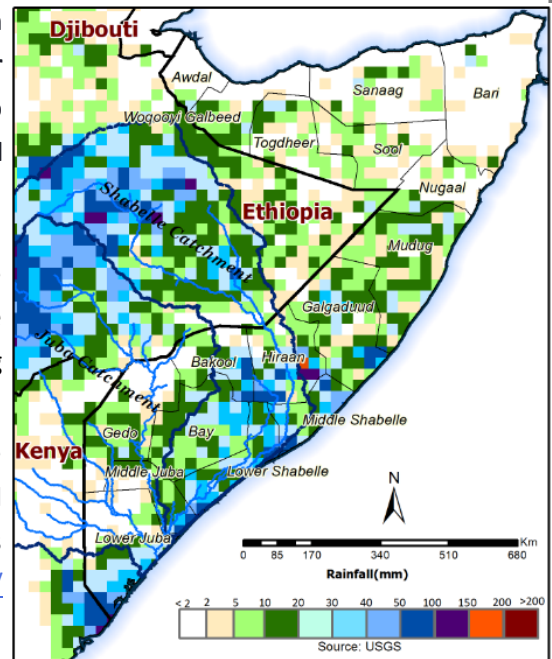
Observed levels of the Shabelle River in Somalia have continued to rise alarmingly in the past two weeks. This has been attributed to unprecedented excessive rains in the upper parts of the Ethiopian highlands especially in the last three days. The rainfall forecast for the coming week (08—14 May 2021) is pointing towards moderate to heavy rains within the upper parts of the Ethiopian highlands and light to moderate rains within the Shabelle basin inside Somalia.

**Shabelle River:** Heavy rains have been reported in Hiraan and Middle Shabelle regions in the last 24 hours with Jowhar station recording 86 mm of rainfall this morning. Flooding of high magnitude has been reported along the Shabelle River in Ethiopia and the flood wave is expected to reach the Somalia side in the next few days. There is a **high flood risk** in Belet Weyne district in the **next to two to three days**. The flood wave will be transmitted to the middle and lower reaches towards the end of the week. The situation could be further exacerbated by weak river embankments and open river banks, which is already causing floods in Jowhar. **There is need for communities living along the riverine areas of the Shabelle River to take precaution as the river flow is expected to reach bank-full level before the end of the week.**

**Juba River:** The levels have been low in the previous week but rose drastically in the last 24 hours. At Dollow, the levels have surpassed the moderate risk level of flooding. There is a **moderate risk** of flooding along the Juba River especially in Dollow district.

Users are advised that this is a forecast and at times there may be discrepancies between estimates and actual amounts of rainfall received. Information on the forecast and observed river levels is updated daily and can be found on this link: <http://frrims.faoswalim.org>.

Map 1: Weekly rainfall forecast (08-14 May 2021)



This update is produced by the: FAO - Somalia Water and Land Information Management—SWALIM Project.  
For more information please contact [swalim@fao.org](mailto:swalim@fao.org) or visit <http://www.faoswalim.org>

FAO SWALIM Technical Partners:



SWALIM is Managed by FAO and Currently Funded by:

