

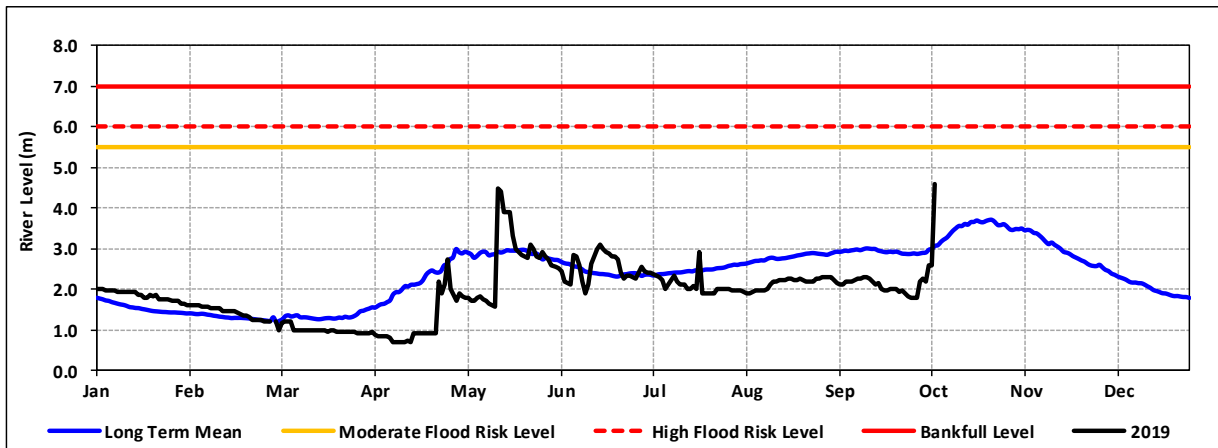


The Deyr rainy season continued to spread in space and magnitude during the last week. The last two days saw heavy rains in parts of Juba and Shabelle basins with some stations recording more than 100mm of rainfall. The Ethiopian highlands also received very heavy rains in the last few days. This has consequently led to increased levels along the Juba and Shabelle Rivers both in Ethiopia and Somalia with some cases of river flooding.

Shabelle River: The levels remained high in the last few weeks and continued to increase following the heavy rains. Unofficial field reports further indicate flooding in parts of Mustahil and Kalafo within the Shabelle basin in Ethiopia. The flood wave is expected to be transmitted downstream into Somalia in the coming few days leading to a further increase of river levels that may cause flooding along the River.

Juba River: The levels have been low in the previous week but rose drastically in the last 24 hours. At Dollow and Luuq stations in Gedo region, there was 2m rise in the last 24 hours as seen in Figure 1. Riverine flooding and flash floods have been reported in Dollow and the surrounding areas.

Figure 1: Current river levels at Luuq along Juba River compared to bank full and historical means

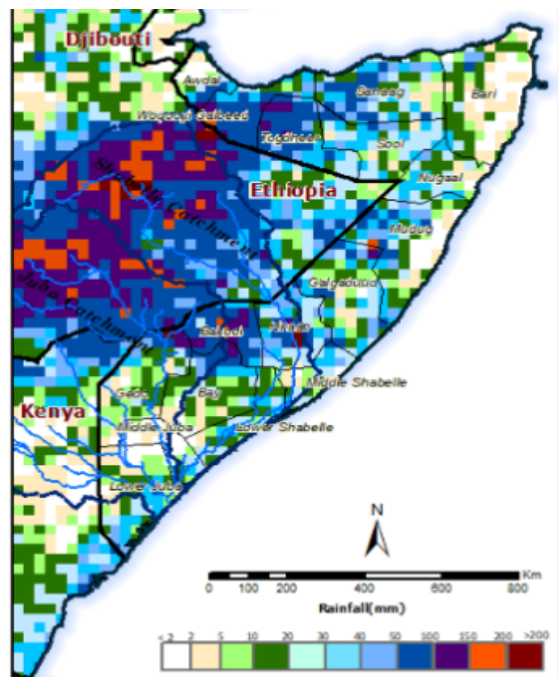


The rainfall forecast for the coming week indicates a greater likelihood of increased rainfall activities in many parts of the country including the Juba and Shabelle basins both in Ethiopia and Somalia (Map 1).

There is therefore **high risk of flooding** during this week along the two rivers given the current situation. Areas to watch along the Shabelle River include Jowhar town and its environs; where the river level is currently near bankfull level and other riverine towns in the Lower Shabelle region. The situation could be further exacerbated by weak river embankments and open river banks. Other areas to watch along the Juba include Dollow and the mid reaches of the River.

Users are advised that this is a forecast and at times there may be discrepancies between estimates and actual amounts of rainfall received. Information on the forecast and observed river levels is updated daily and can be found on this link: <http://frrims.faoswalim.org>

Map 1: Seven day cumulated rainfall forecast



This update is produced by the: FAO - Somalia Water and Land Information Management—SWALIM Project. For more information please contact SO-hydro@fao.org or visit <http://www.faoswalim.org>

FAO SWALIM Technical Partners:



SWALIM is Managed by FAO and Currently Funded by:

