

Somalia Flood Watch

Issued: 04 May 2016



FLOOD WARNING LEVEL

KEY TO WARNING LEVELS

	Last Week	Coming Week
Shabelle		
Juba		

- Severe Flooding Possible** (Red)
- Moderate Flooding (up to 5 year return period)** (Orange)
- Minimal/No Flood Risk** (Green)

During the week that ended on 3rd May 2016, moderate to heavy rains were experienced in most areas of Juba and Shabelle basins inside Somalia as well as the Ethiopian highlands. Mataban in Hiraan region recorded a total of 115mm in the week while Bur Hakaba in Bay region received a total of 92mm during the same period. Map - 1 shows the total satellite Rainfall Estimates (RFE) for the week while Map –2 shows the rainfall forecast for coming week.

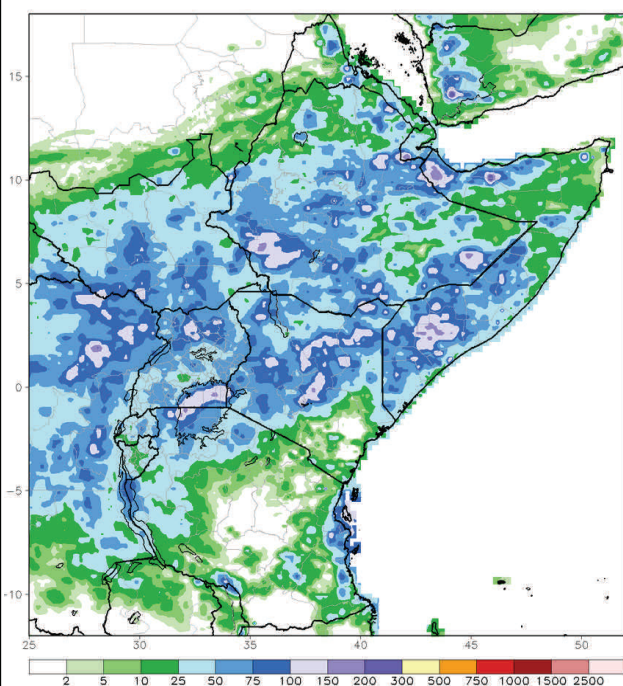
Station Name	Luuq	Bardheere	Bur Hakaba	Dollow	Belet Weyne	Mataban
Rainfall (mm)	17.0	43.0	92.0	89.0	9.0	115.0
Station Name	Bulo Burti	Jowhar	Balcad	Mogadishu	Wanle Weyne	Bualle
Rainfall (mm)	19.0	62.0	25.0	33.0	30.0	13.0

Satellite rainfall estimates (Map-1) also indicates moderate to heavy rainfall amounts during the same period within the Juba and Shabelle basins. The rainfall forecast for the coming week (Map – 2) indicates a possibility of moderate to heavy rains in two river basins both in Somalia and within the Ethiopian highlands.

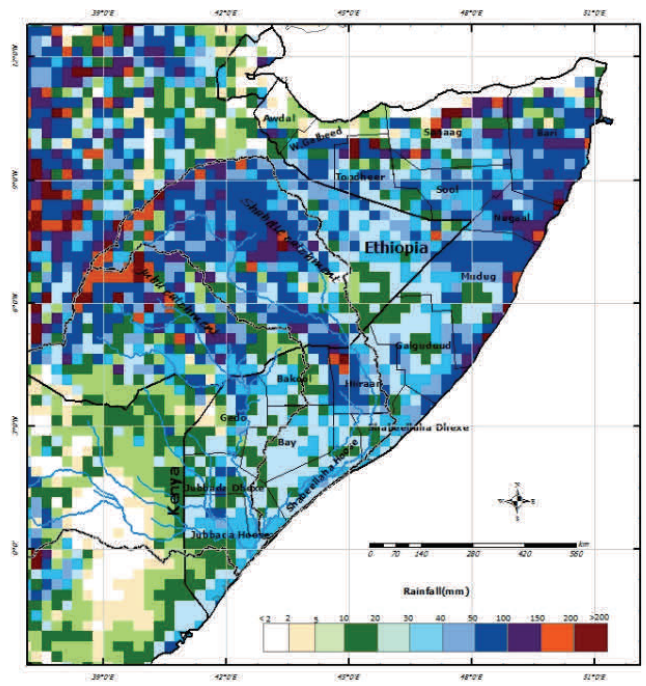
River levels have been increasing since mid April due to heavy rains received within the basins. Currently, the levels are above the normal at this time of the year at all monitoring stations along the two rivers.

Given the rainfall forecast and the rising river levels there is a foreseen **high** risk of flooding in the middle and lower reaches of Shabelle River while **moderate** risk of flooding is foreseen along Juba during the forecast period.

Map –1: Total RFE: Week ending 02/05/2016



Map-2: 7-Day Rainfall Forecast: up to 10/05/2016



This bulletin is produced by the FAO Somalia Water and Land Information Management (SWALIM). For more information send an e-mail to SO-Hydro@fao.org or visit <http://www.faoswalim.org>

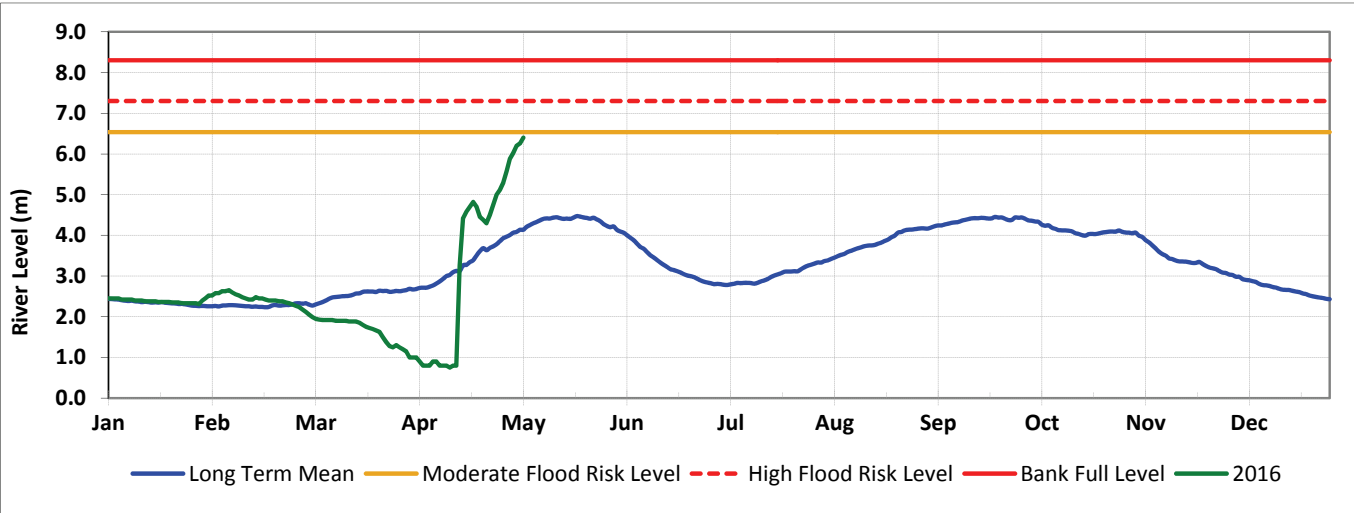
Technical Partners



SWALIM Funding Agencies



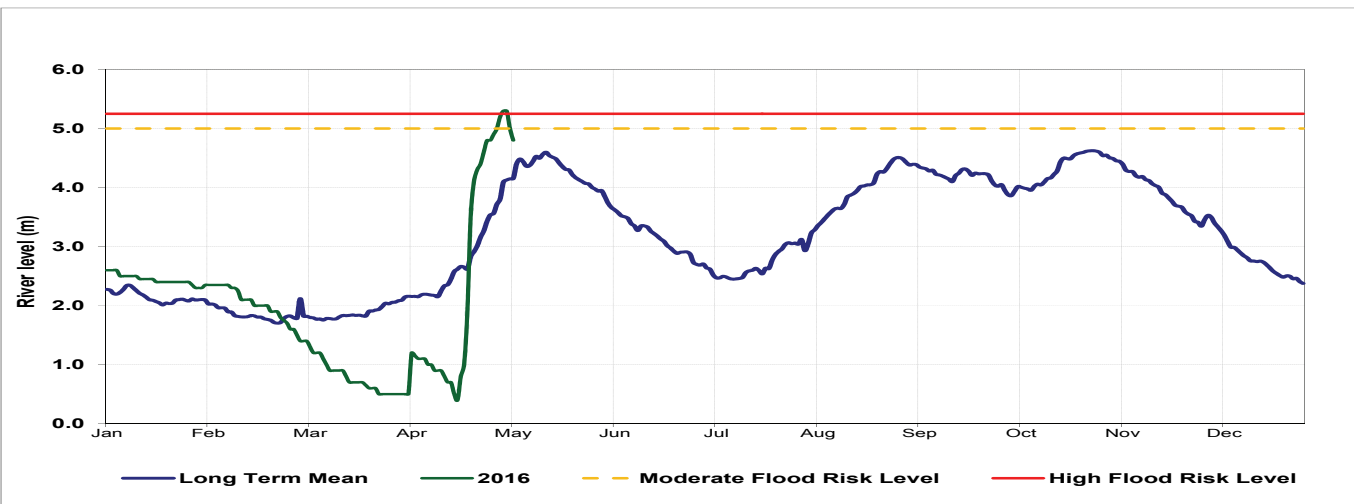
Belet Weyne



Date	Observed River Level (m)	Moderate Flood Risk Level (m)	High Flood Risk Level (m)
04/05/2016	6.40	6.50	7.30

Observed river levels at Belet Weyne decreased during the last week . Today’s river level is 6.40m which is less than one meter below the high risk flood level.

Jowhar



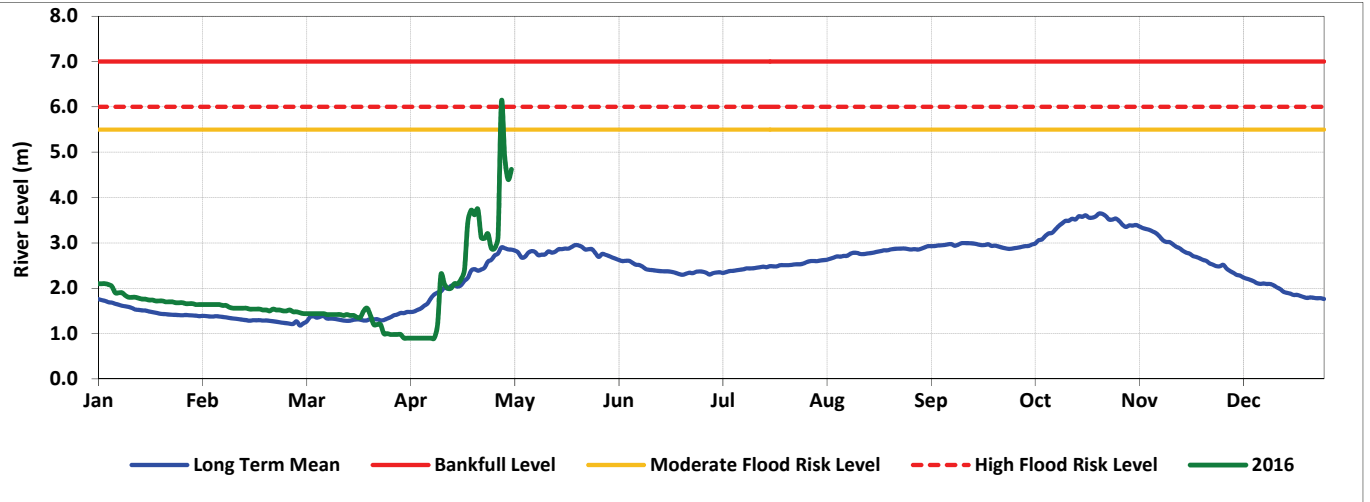
Date	Observed River Level (m)	Moderate Flood Risk Level (m)	High Flood Risk Level (m)
04/05/2016	4.80	5.00	5.25

Observed river levels at Jowhar remained high through out the week. Today’s river level is 4.80m which is a few centimetres from the high risk flood level.

Forecast for coming week for Shabelle

Moderate to heavy rains within the Shabelle basin inside Somalia and the Ethiopian highlands have led to sharp river level increase. Observed river levels in the middle parts of the river are high and given the rainfall forecast there is a high risk of flooding in the middle and lower reaches of the river.

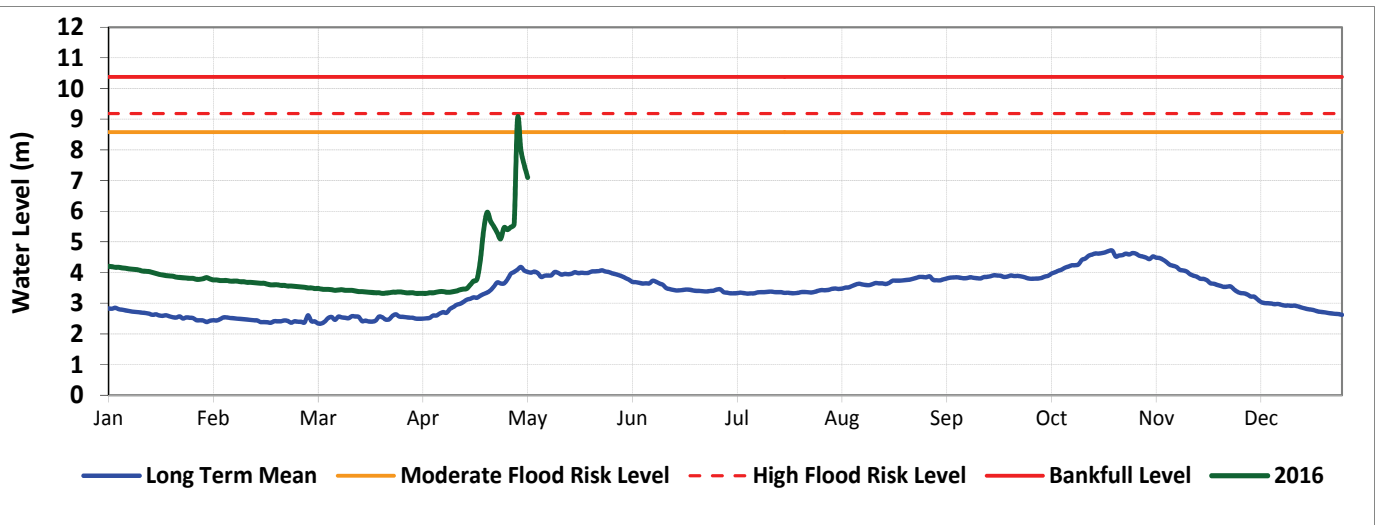
Luuq



Date	Observed River Level (m)	Moderate Flood Risk Level (m)	High Flood Risk Level (m)
04/05/2016	4.56	5.50	6.00

Observed river level at Luuq fluctuated over the last week. Today's river level is 4.56m which is 1.44m below the high risk flood level.

Bardheere



Date	Observed River Level (m)	Moderate Flood Risk Level (m)	High Flood Risk Level (m)
04/05/2016	7.10	8.58	9.18

Observed river levels at Bardheere increased sharply in the middle of the week and reduced in the last few days. Today's river level is 7.10m which is 2.08m below the high risk flood level.

Forecast for coming week for Juba

Given the rainfall forecast and the rising levels there is a moderate risk of flooding in the middle and lower parts of the Juba River.