

Somalia Flood Watch

Issued: 18 April 2018



Food and Agriculture Organization
of the United Nations



FLOOD WARNING LEVEL

	Last Week	Coming Week
Shabelle		
Juba		

KEY TO WARNING LEVELS

Severe Flooding Possible

Moderate Flooding (up to 5 year return period)

Minimal/No Flood Risk

During the week ending on 17 April 2018, the Juba and Shabelle basins in Somalia and in the Ethiopian highlands continued to receive moderate to heavy rains. Following the heavy rains, flash floods were reported in many places within the two basins leading to displacements, inundation of croplands and destruction of property (Annex 1). The table below shows the total rainfall amounts recorded in selected stations within the two basins over the last one week.

Station Name	Luuq	Bardheere	Mataban	Belet Weyne	Baidoa	Bulo Burti	BurHakaba
Rainfall (mm)	94.0	62.0	165.0	73.0	89.0	113.5	112.0

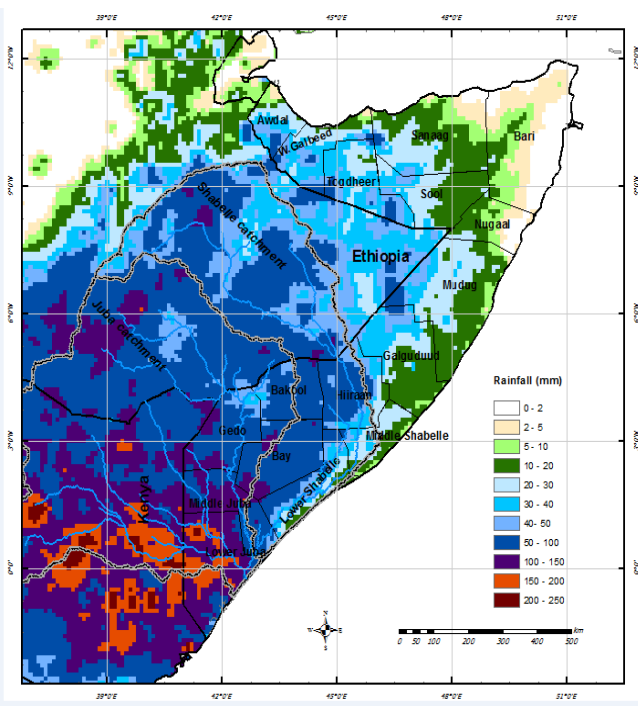
Map 1 shows the total Satellite Rainfall Estimates (RFE) of last week which shows moderate to heavy rains within the basins. Middle and Lower Juba regions received the highest amounts of rainfall of more than 100mm in total over the week. Map 2 shows the rainfall forecast for coming week valid until 24 April 2018 and is calling for more rains in the basins.

Following the good rains river levels along the Juba and Shabelle rivers continued to rise reaching the high flood risk levels in the upper and mid sections of the two rivers.

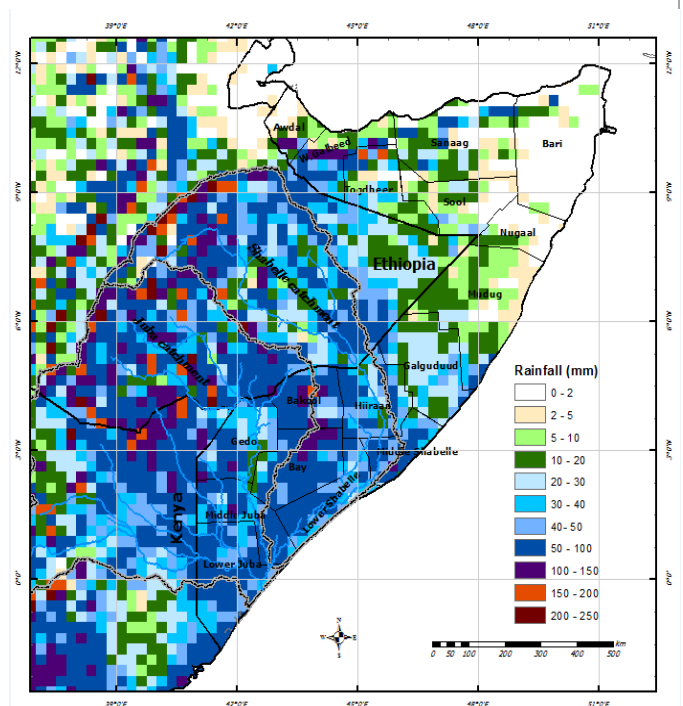
Given the rainfall forecast and the high river levels, there is a **high** risk of flooding in the middle and lower reaches of the Juba and Shabelle rivers with some sections having experienced overbank river flow due to weak river embankments and open river breakages.

Flash floods in built up and low lying areas within the basins cannot be ruled out during the period under review.

Map -1: Total RFE: Week ending 17 April 2018



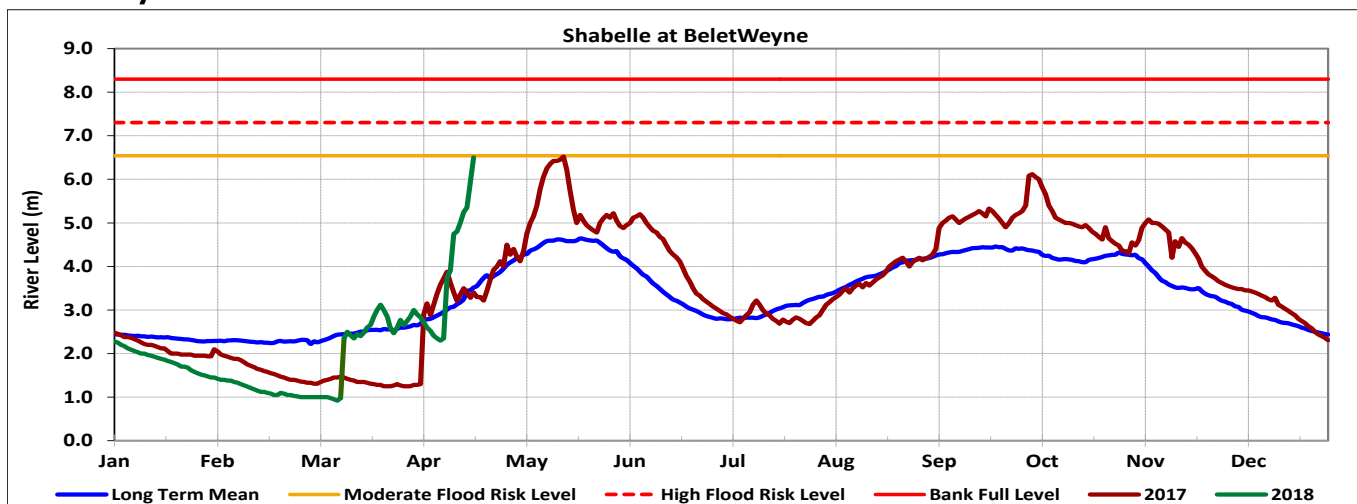
Map-2: 7-Day Rainfall Forecast: up to 24 April 2018



This update is produced by the: FAO - Somalia Water and Land Information Management—SWALIM Project. For more information regarding this product please contact SO-hydro@fao.org or visit <http://www.faoswalim.org>

Primary data sources are; Ministry of Agriculture & Irrigation and Ministry of Energy & Water Resources of the Federal Government of Somalia, SWALIM and NOAA/USGS. Tables, Maps and graphs on this bulletin are produced from three sources.

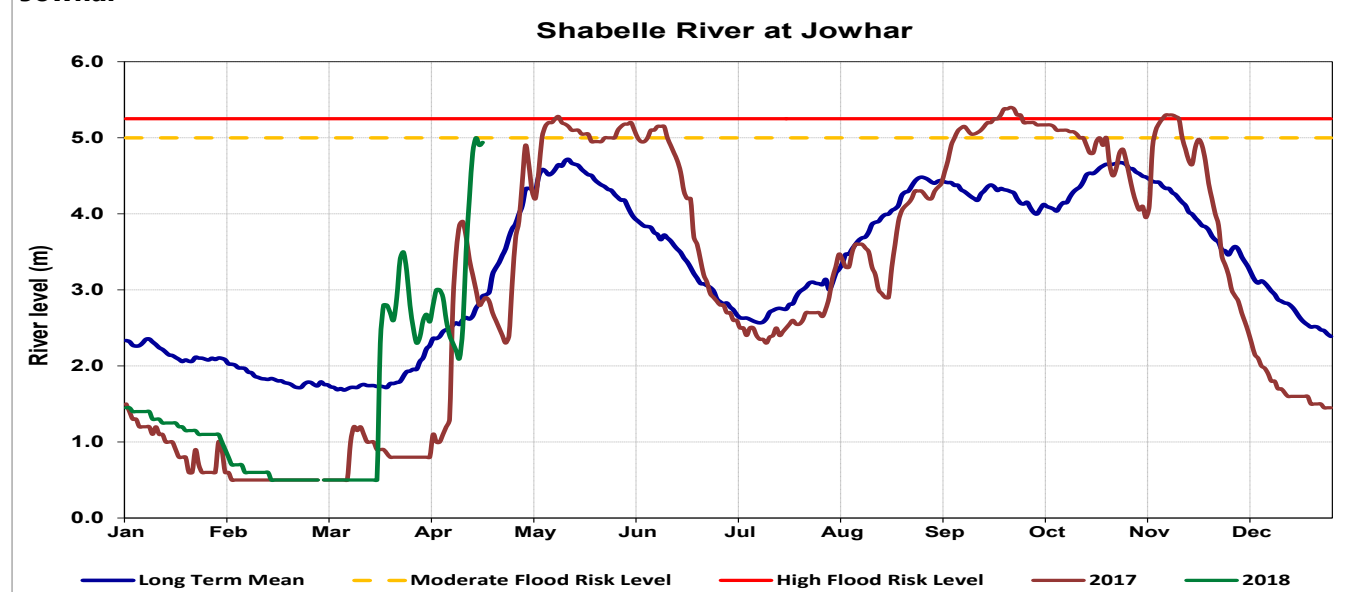
Belet Weyne



Date	Observed River Level (m)	Moderate Flood Risk Level (m)	High Flood Risk Level (m)
18 April 2018	6.50	6.50	7.30

Observed river levels at Belet Weyne continued to rise over the last week and reached the moderate flood risk level this morning. Given the rainfall forecast, the rising trend of river levels is expected to continue in the course of the week.

Jowhar



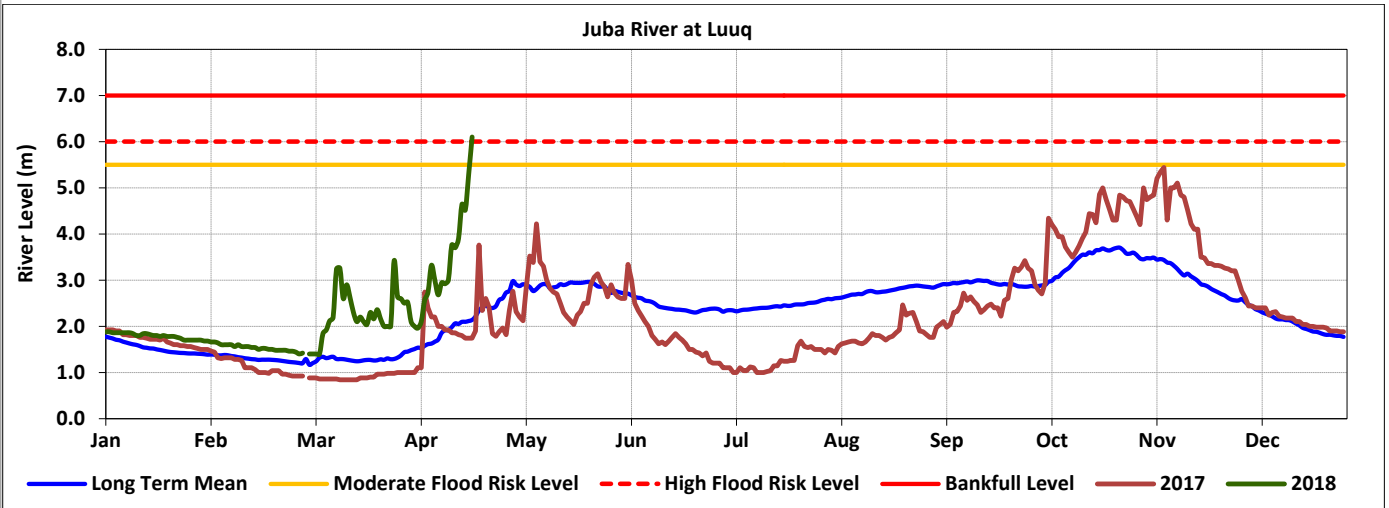
Date	Observed River Level (m)	Moderate Flood Risk Level (m)	High Flood Risk Level (m)
18 April 2018	4.94	5.00	5.25

Observed river levels at Jowhar, which is in the middle parts of the river, increased over the last few days and is expected to continue rising posing a high risk of flooding in the area.

Forecast for coming week for Shabelle

Given the rainfall forecast and the high river levels, there is a high risk of flooding along the Shabelle in the coming week especially in the middle and lower reaches.

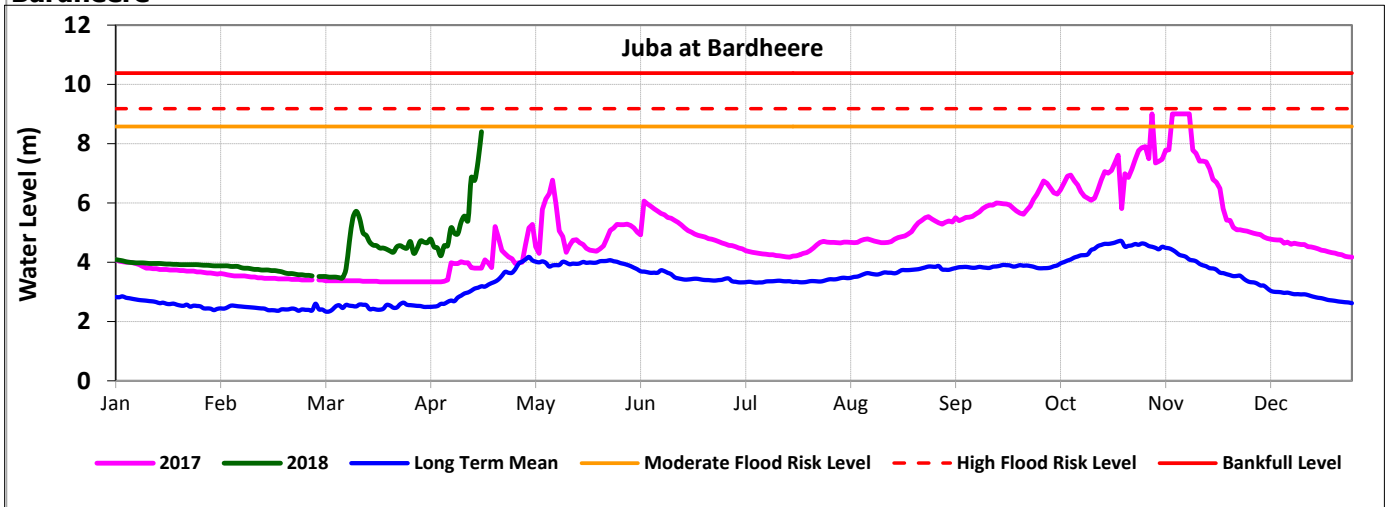
Luuq



Date	Observed River Level (m)	Moderate Flood Risk Level (m)	High Flood Risk Level (m)
18 April 2018	6.10	5.50	6.00

Observed river level at Luuq sharply increased over the last week. Currently the river level is at the high flood risk.

Bardheere



Date	Observed River Level (m)	Moderate Flood Risk Level (m)	High Flood Risk Level (m)
18 April 2018	8.40	7.40	8.20

Observed river levels at Bardheere continued to rise over the last week, with the current level surpassing the high flood risk level.

Forecast for coming week for Juba

Given the rainfall forecast and the high river levels, there is a high risk of flooding along the Juba in the coming week especially in the middle and lower reaches.

SWALIM Technical Partners



SWALIM is Currently Funded by:



ANNEX 1: CONFIRMED FLOOD AFFECTED AREAS IN JUBA AND SHABELLE BASINS

FLOOD AFFECTED VILLAGES AS AT 18 APRIL 2018				
Region	District	Type of Flooding (River/Flash Floods)	Affected Villages/Farms	Impacts
Hiraan	Belet Weyne	River	Hilokeliyo, Shiniile, Leebow	Inundation of crop lands
Middle Shabelle	Jowhar	River	Maandhere, Bayaxow, Fanole, Horseed, Jilyaale IDP Camp, Biaza IDP Camp	Inundation of crop lands
Gedo	Dollow	River and flash floods	Dollow town, barabaray, bantaay and qaloocon	Five people drowned, destruction of property, inundation of croplands and displacement of population
Gedo	Luuq	River	Luuqgudey, Taleex, Xero Korbaad, Yaxaasow	Farms along the river flooded
Middle Juba	Buale	River	Rahole, Dhujuma, Biley, Kafinge Banta	About 200ha of cropped land flooded
	Saakow	River	Not specified	
	Jilib	River	Not specified	
Bakool	Tiaglow	Flash Floods	Not specified	Displacement of populations and destruction of properties including houses
	Huddur	Flash Floods	Not specified	
	El Berde	Flash Floods	Not specified	

SWALIM Technical Partners



SWALIM is Currently Funded by:

