

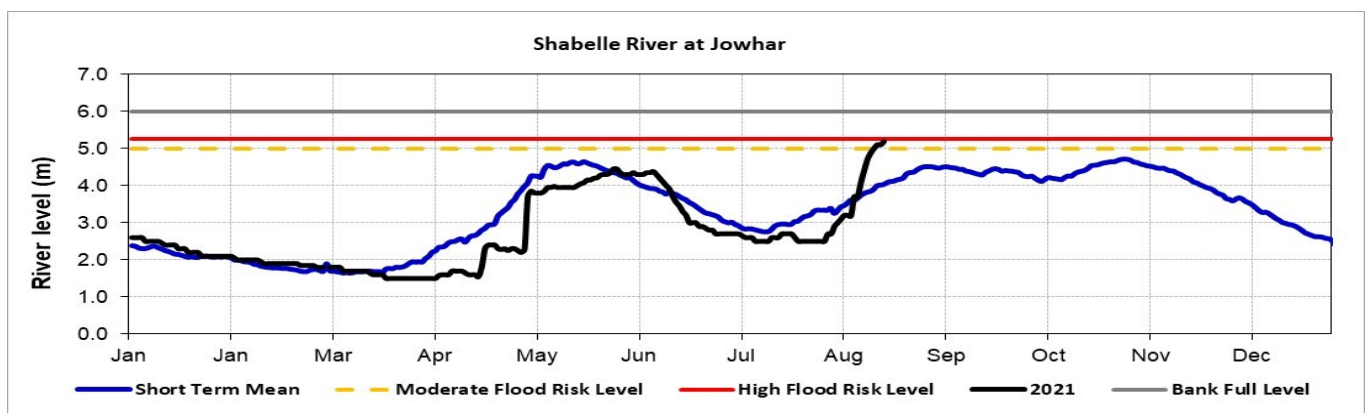
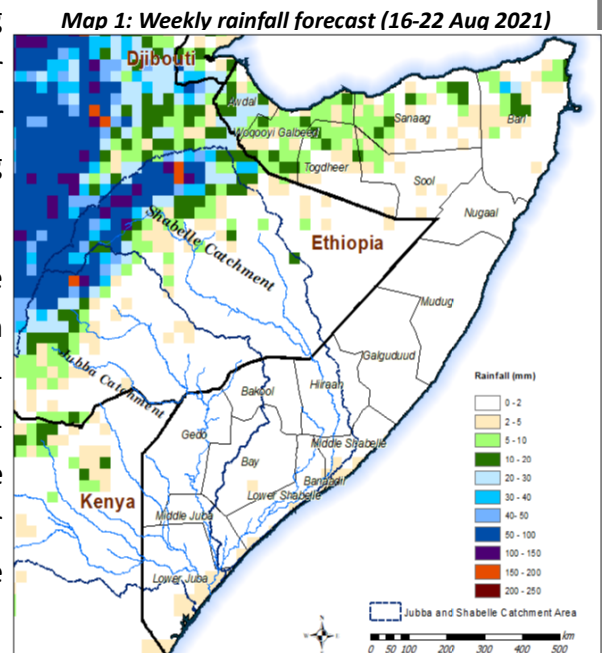
## Flood Update—Jowhar District

**Issued: 16 August 2021**

Observed levels of the Shabelle River in Somalia have been rising for the past two weeks. This has been attributed to moderate rains in the upper parts of the Ethiopian highlands. Currently, river levels at the upper reaches inside Somalia (Hiraan Region at Belet Weyne and Bulo Burti), are slightly above the normal range, while the mid and lower reaches (Middle and Lower Shabelle regions) are significantly above the normal levels at this time of the year. This has resulted in over bank spillage leading to riverine floods in parts Middle Shabelle. Further, **two open river breakages in Jowhar district** located in **Bodale** and **Halgan village** which are 22 km and 8 km south of Jowhar town respectively, have led to massive flooding in the area since 14 August 2021. According to field reports, several households have been affected and hundreds of crop destroyed.

The rainfall forecast for the coming week (16 to 22 Aug 2021) is pointing towards moderate rains within the upper parts of the Ethiopian highlands. Given the forecast, river levels are expected to continue rising further in the coming week.

Therefore, the flooding in Jowhar is high likely to be sustained throughout the week. Other areas to watch include riverine towns in the lower Shabelle region. Preliminary results from analysis of current status of river breakages along the Shabelle River by SWALIM indicate that there are several open and weak points and this could further exacerbate the flood situation. An updated database of the river breakages will be shared within a week.



*This update is produced by the: FAO - Somalia Water and Land Information Management—SWALIM Project.  
For more information please contact: [swalim@fao.org](mailto:swalim@fao.org) or visit <http://www.fao.org/swalim>*

FAO SWALIM Technical Partners:



SWALIM is Managed by FAO and Currently Funded by:

