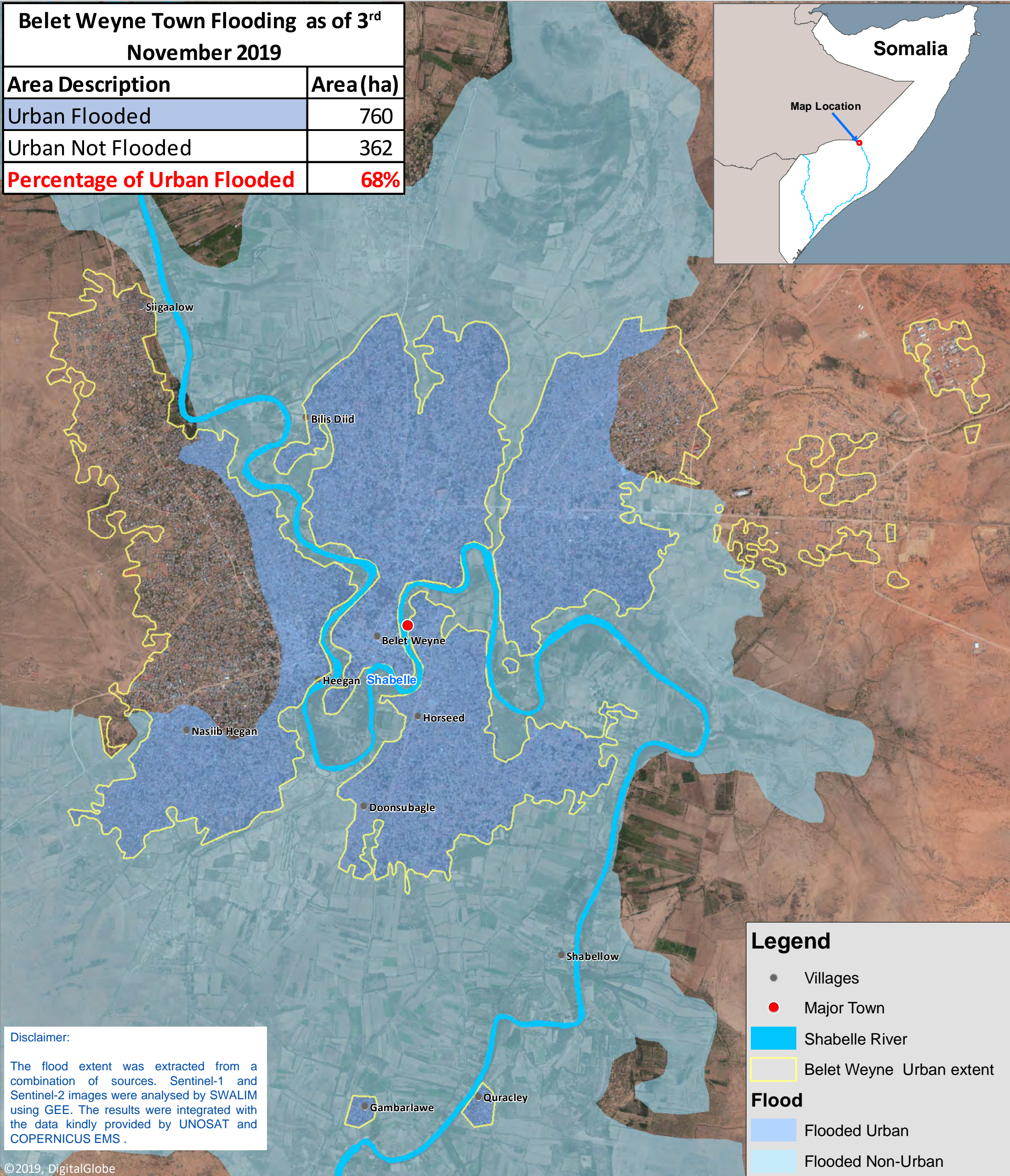
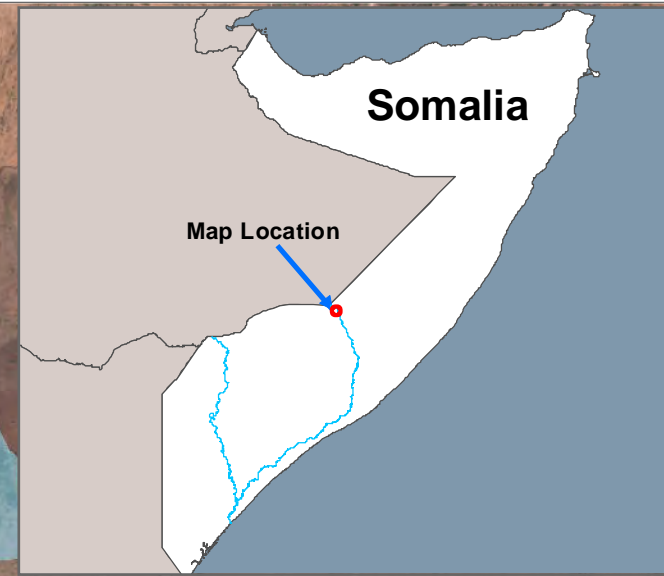




**Belet Weyne Town Flooding as of 3<sup>rd</sup> November 2019**

Area Description	Area (ha)
Urban Flooded	760
Urban Not Flooded	362
<b>Percentage of Urban Flooded</b>	<b>68%</b>



**Legend**

- Villages
- Major Town
- Shabelle River
- Belet Weyne Urban extent

**Flood**

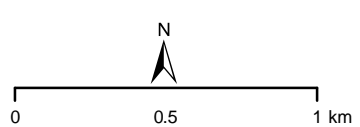
- Flooded Urban
- Flooded Non-Urban

**Disclaimer:**  
The flood extent was extracted from a combination of sources. Sentinel-1 and Sentinel-2 images were analysed by SWALIM using GEE. The results were integrated with the data kindly provided by UNOSAT and COPERNICUS EMS.

© 2019, DigitalGlobe



Map Ref: SOM\_Beletweyne\_Flooding\_04112019A3\_  
Map Produced by: The Somalia Water and Land Information Management Project (SWALIM).  
SWALIM is a Multi-donor Project Implemented by the United Nations' Food & Agriculture Organization.  
For copies of digital data please contact: [swalim@fao.org](mailto:swalim@fao.org)  
Map projection: Geographic Coordinates, WGS 84 datum.



Data Source: FAO, UNOSAT, GEE, COPERNICUS EMS, ESA, UNOSAT, DIGITAL GLOBE.  
Date Created: 04/11/2019  
Contact: [swalim@fao.org](mailto:swalim@fao.org)  
Website: [www.faoswalim.org](http://www.faoswalim.org)  
The boundaries and names and the designations used on this map do not imply official endorsement or acceptance by the United Nations.