



**Legend**

- Open Breakages - O (109)
- Canal Flooding Point - CI (18)
- ▲ River Overflow - Of (226)
- Closed with Sandbag Breakages - Cs (05)
- Settlement
- Major Town
- ★ National Capital
- River
- Diversion Canal
- Major Road
- Minor Road
- District Boundary
- Historical Flood Extent

**Map Information**

**Map Reference:**  
SOM\_WATER\_BREAKAGES\_JUBA\_MARCH\_03032024\_A3

**Produced by:**  
The Somalia Water and Land Information Management Project (SWALIM) by means of visual image interpretation

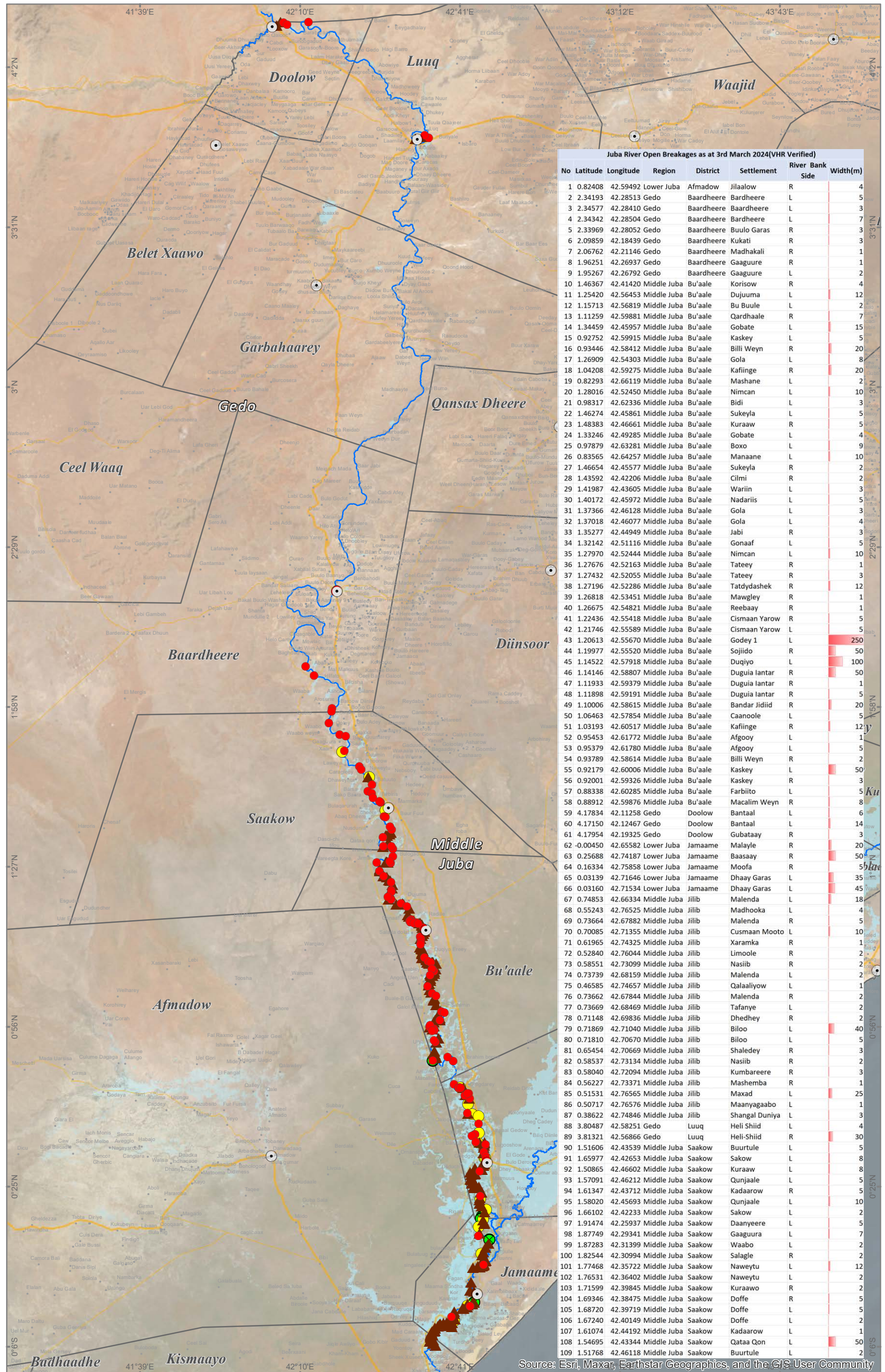
SWALIM is a multi-donor project implemented by the United Nation's Food and Agriculture Organization (FAO)

For copies of digital data please contact: [swalim@fao.org](mailto:swalim@fao.org)

**VHR Verified :** The Breakage Status has been Verified Using a Current Very High Resolution(VHR) Satellite Imagery

**Not Verified** There is no current VHR Imagery over this site/ The available image is cloudy hindering current assessment. Site Assumed Previous Verified Status

**Satellite data:** WV2/WV3/PLEIADES  
**Imagery dates:** Dec 2023  
**Imagery resolution:** 0.3 - 0.5 Meter  
**Imagery source:** Digital Globe, Airbus  
**Other dataset:** FAO-SWALIM, UNDP  
**Analysis:** FAO-SWALIM  
**Map projection:** Geographic  
**Datum:** WGS 84



**Juba River Open Breakages as at 3rd March 2024(VHR Verified)**

No	Latitude	Longitude	Region	District	Settlement	River Bank Side	Width(m)
1	0.82408	42.59492	Lower Juba	Afmadow	Jilaalow	R	4
2	2.34193	42.28513	Gedo	Baardheere	Bardheere	L	5
3	2.34577	42.28410	Gedo	Baardheere	Baardheere	L	3
4	2.34342	42.28504	Gedo	Baardheere	Bardheere	L	7
5	2.33969	42.28052	Gedo	Baardheere	Buulo Garas	R	3
6	2.09859	42.18439	Gedo	Baardheere	Baardheere	R	3
7	2.06762	42.21146	Gedo	Baardheere	Madhakali	R	1
8	1.96251	42.26937	Gedo	Baardheere	Gaaguure	R	1
9	1.95267	42.26792	Gedo	Baardheere	Gaaguure	L	2
10	1.46367	42.41420	Middle Juba	Bu'aale	Korisow	R	4
11	1.25420	42.56453	Middle Juba	Bu'aale	Duujuma	L	12
12	1.15713	42.56819	Middle Juba	Bu'aale	Bu Buule	L	2
13	1.11259	42.59881	Middle Juba	Bu'aale	Qardhaale	R	17
14	1.34459	42.45957	Middle Juba	Bu'aale	Gobate	L	5
15	0.92752	42.59915	Middle Juba	Bu'aale	Kaskey	L	15
16	0.93446	42.58412	Middle Juba	Bu'aale	Billi Weyn	R	20
17	1.26909	42.54303	Middle Juba	Bu'aale	Gola	L	8
18	1.04208	42.59275	Middle Juba	Bu'aale	Kafiinge	R	20
19	0.82293	42.66119	Middle Juba	Bu'aale	Mashane	L	2
20	1.28016	42.52450	Middle Juba	Bu'aale	Nimcan	L	10
21	0.98317	42.62336	Middle Juba	Bu'aale	Bidi	L	3
22	1.46274	42.45861	Middle Juba	Bu'aale	Sukeyla	L	5
23	1.48383	42.46661	Middle Juba	Bu'aale	Kuraaw	R	5
24	1.33246	42.49285	Middle Juba	Bu'aale	Gobate	L	2
25	0.97879	42.63281	Middle Juba	Bu'aale	Boxo	L	4
26	0.83565	42.64257	Middle Juba	Bu'aale	Manaane	L	10
27	1.46654	42.45577	Middle Juba	Bu'aale	Sukeyla	R	2
28	1.43592	42.42206	Middle Juba	Bu'aale	Cilmi	R	2
29	1.41987	42.43605	Middle Juba	Bu'aale	Wariri	L	3
30	1.40172	42.45972	Middle Juba	Bu'aale	Nadariis	L	5
31	1.37366	42.46128	Middle Juba	Bu'aale	Gola	L	3
32	1.37018	42.46077	Middle Juba	Bu'aale	Gola	L	4
33	1.35277	42.44949	Middle Juba	Bu'aale	Jabi	R	3
34	1.32142	42.51116	Middle Juba	Bu'aale	Gonaaf	L	5
35	1.27970	42.52444	Middle Juba	Bu'aale	Nimcan	L	10
36	1.27676	42.52163	Middle Juba	Bu'aale	Tateey	R	1
37	1.27432	42.52055	Middle Juba	Bu'aale	Tateey	R	3
38	1.27196	42.52286	Middle Juba	Bu'aale	Tatdydashek	R	12
39	1.26818	42.53451	Middle Juba	Bu'aale	Mawgley	R	1
40	1.26675	42.54821	Middle Juba	Bu'aale	Reebaay	R	1
41	1.22436	42.55418	Middle Juba	Bu'aale	Cismaan Yarow	R	5
42	1.21746	42.55589	Middle Juba	Bu'aale	Cismaan Yarow	L	5
43	1.20613	42.55670	Middle Juba	Bu'aale	Godey 1	L	250
44	1.19977	42.55520	Middle Juba	Bu'aale	Sojido	R	50
45	1.14522	42.57918	Middle Juba	Bu'aale	Duqiyo	L	100
46	1.14146	42.58807	Middle Juba	Bu'aale	Dugua lantar	R	50
47	1.11933	42.59379	Middle Juba	Bu'aale	Dugua lantar	R	1
48	1.11898	42.59191	Middle Juba	Bu'aale	Dugua lantar	R	5
49	1.10006	42.58615	Middle Juba	Bu'aale	Bandar Jidiid	R	20
50	1.06463	42.57854	Middle Juba	Bu'aale	Caanoole	L	5
51	1.03193	42.60517	Middle Juba	Bu'aale	Kafiinge	R	12
52	0.95453	42.61772	Middle Juba	Bu'aale	Afgooy	L	1
53	0.95379	42.61780	Middle Juba	Bu'aale	Afgooy	L	5
54	0.93789	42.58614	Middle Juba	Bu'aale	Billi Weyn	R	2
55	0.92179	42.60006	Middle Juba	Bu'aale	Kaskey	L	50
56	0.92001	42.59326	Middle Juba	Bu'aale	Kaskey	R	3
57	0.88338	42.60285	Middle Juba	Bu'aale	Farbitto	L	5
58	0.88912	42.59876	Middle Juba	Bu'aale	Macalim Weyn	R	8
59	4.17834	42.11258	Gedo	Doolow	Bantaal	L	16
60	4.17150	42.12467	Gedo	Doolow	Bantaal	L	4
61	4.17954	42.19325	Gedo	Doolow	Gubataay	R	3
62	-0.00450	42.65582	Lower Juba	Jamaame	Malayle	R	20
63	0.25688	42.74187	Lower Juba	Jamaame	Baasaay	R	50
64	0.16334	42.75858	Lower Juba	Jamaame	Moofa	R	1
65	0.03139	42.71646	Lower Juba	Jamaame	Dhaay Garas	L	35
66	0.03160	42.71534	Lower Juba	Jamaame	Dhaay Garas	L	45
67	0.74853	42.66334	Middle Juba	Jilib	Malenda	L	18
68	0.55243	42.76525	Middle Juba	Jilib	Madhooqa	L	4
69	0.73664	42.67882	Middle Juba	Jilib	Malenda	R	5
70	0.70085	42.71355	Middle Juba	Jilib	Cusmaan Mooto	L	10
71	0.61965	42.74325	Middle Juba	Jilib	Xaramka	R	1
72	0.52840	42.76044	Middle Juba	Jilib	Limoole	R	2
73	0.58551	42.73099	Middle Juba	Jilib	Nasiib	R	2
74	0.73739	42.68159	Middle Juba	Jilib	Malenda	L	2
75	0.46585	42.74657	Middle Juba	Jilib	Qalaaliyow	L	1
76	0.73662	42.67844	Middle Juba	Jilib	Malenda	L	2
77	0.73669	42.68469	Middle Juba	Jilib	Tafanye	L	2
78	0.71148	42.69836	Middle Juba	Jilib	Dhedhey	R	2
79	0.71869	42.71040	Middle Juba	Jilib	Biloo	L	40
80	0.71810	42.70670	Middle Juba	Jilib	Biloo	L	5
81	0.65454	42.70669	Middle Juba	Jilib	Shaledey	R	3
82	0.58537	42.73134	Middle Juba	Jilib	Nasiib	R	2
83	0.58040	42.72094	Middle Juba	Jilib	Kumbareere	R	3
84	0.56227	42.73371	Middle Juba	Jilib	Mashemba	R	1
85	0.51531	42.76565	Middle Juba	Jilib	Maxad	L	25
86	0.50717	42.76576	Middle Juba	Jilib	Maanyagaabo	L	1
87	0.38622	42.74846	Middle Juba	Jilib	Shangal Duniya	L	3
88	3.80487	42.58251	Gedo	Luq	Heli Shiid	L	4
89	3.81321	42.56866	Gedo	Luq	Heli Shiid	R	30
90	1.51606	42.43539	Middle Juba	Saakow	Buurtule	L	5
91	1.65977	42.42653	Middle Juba	Saakow	Sakow	L	8
92	1.50865	42.46602	Middle Juba	Saakow	Kuraaw	L	8
93	1.57091	42.46212	Middle Juba	Saakow	Qunjaale	L	5
94	1.61347	42.43712	Middle Juba	Saakow	Kadaarow	R	5
95	1.58020	42.45693	Middle Juba	Saakow	Qunjaale	L	10
96	1.66102	42.42233	Middle Juba	Saakow	Sakow	L	2
97	1.91474	42.25937	Middle Juba	Saakow	Danyeere	L	5
98	1.87749	42.29341	Middle Juba	Saakow	Gaaguura	L	7
99	1.87283	42.31399	Middle Juba	Saakow	Waabo	L	2
100	1.82544	42.30994	Middle Juba	Saakow	Salagle	R	2
101	1.77468	42.35722	Middle Juba	Saakow	Naweytu	L	12
102	1.76531	42.36402	Middle Juba	Saakow	Naweytu	L	2
103	1.71599	42.39845	Middle Juba	Saakow	Kuraawo	R	2
104	1.69346	42.38475	Middle Juba	Saakow	Doffe	R	5
105	1.68720	42.39719	Middle Juba	Saakow	Doffe	L	5
106	1.67240	42.40149	Middle Juba	Saakow	Doffe	L	2
107	1.61074	42.44192	Middle Juba	Saakow	Kadaarow	L	1
108	1.54695	42.43344	Middle Juba	Saakow	Qataa Qon	L	50
109	1.51768	42.46118	Middle Juba	Saakow	Buurtule	L	2

Source: Esri, Maxar, Earthstar Geographics, and the GIS User Community