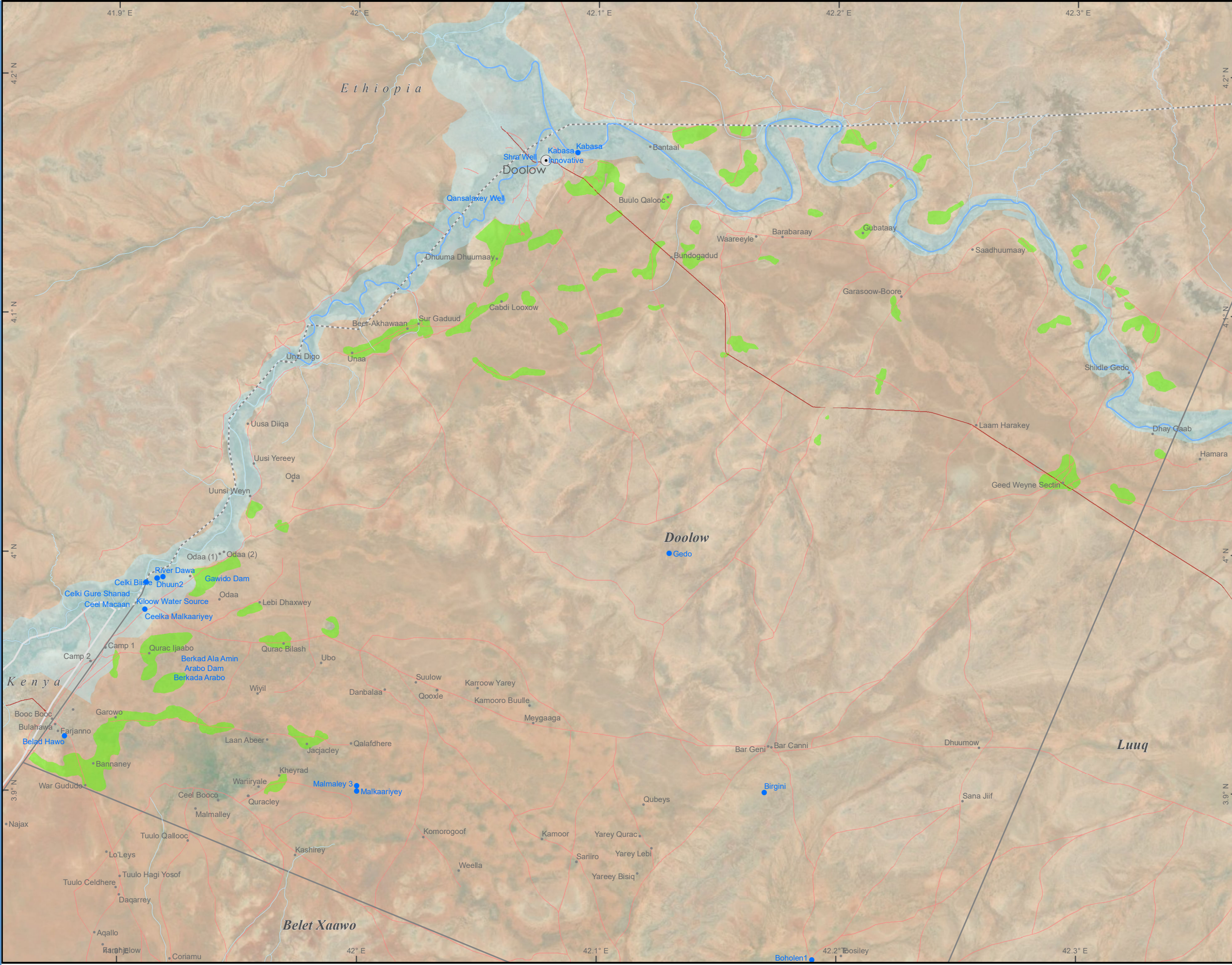


SOMALIA, DOLOW DISTRICT

POTENTIAL HIGHER GROUND FOR EVACUATION FROM FLOODS



Legend

- Water Source
- Major Town
- Settlement
- Major Road
- Minor Road
- Shabelle River
- Drainage Network
- Disputed International Boundary
- International Boundary
- District Boundary
- GLOFAS Forecast Flood Extent
- Potential Higher Ground for Flood Evacuation (59)

Map Information

Methodology:
A suitability analysis was undertaken to identify suitable higher grounds for evacuation during flood events. The analysis considered 9 parameters namely:

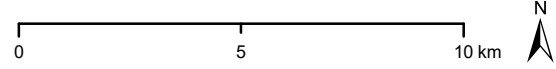
1. Distance from the Projected Flood Extent
2. Elevation
3. Areas of Gentle Slope
4. Topographic Wetness Index (TWI)
5. Drainage Density
6. Proximity to Strategic Boreholes
7. Proximity to Existing Settlements
8. Areas of suitable Land Cover and
9. Proximity to Roads

Please consult the methodology paper that accompanies this map for further details.

Disclaimer:
A Field Assessment on the suitability of each site is required before any interventions.



Map Ref: SOM_WATER_DOLOW_EVACUATION_AREAS_SWALIM_04102023_A3L_10.2
 Map Produced by: The Somalia Water and Land Information Management Project (SWALIM).
 SWALIM is a Multi-donor Project Implemented by the United Nations' Food & Agriculture Organization.
 For copies of digital data please contact: swalim@fao.org
 Map projection: Geographic Coordinates, WGS 84 datum.



Data Source: FAO, UNDP, Maxar, OSM, Google
 Date Created: **04/10/2023**
 Contact: swalim@fao.org
 Website: www.faoswalim.org

The boundaries and names and the designations used on this map do not imply official endorsement or acceptance by the United Nations.