



AFRICA - Somalia



SOMALIA - River Juba



Legend

- Open - Verified Breakage (8)
- Potential Breakage (26)
- ▲ Potential Overflow (9)
- ⊗ Closed with Sandbag (16)
- Settlement
- Major Town
- ★ National Capital
- District Capital
- River
- Major Road
- Minor Road
- District Boundary
- Agriculture
- Historical Flood Extent

Map Information

Map Reference:  
SOM\_WAT\_BU'AALE\_JUBA\_RIVER\_BREAKAGES\_SWALIM\_25082021\_A3

Produced by:  
The Somalia Water and Land Information Management Project (SWALIM).

SWALIM is a multi-donor project implemented by the United Nation's Food & Agriculture Organization

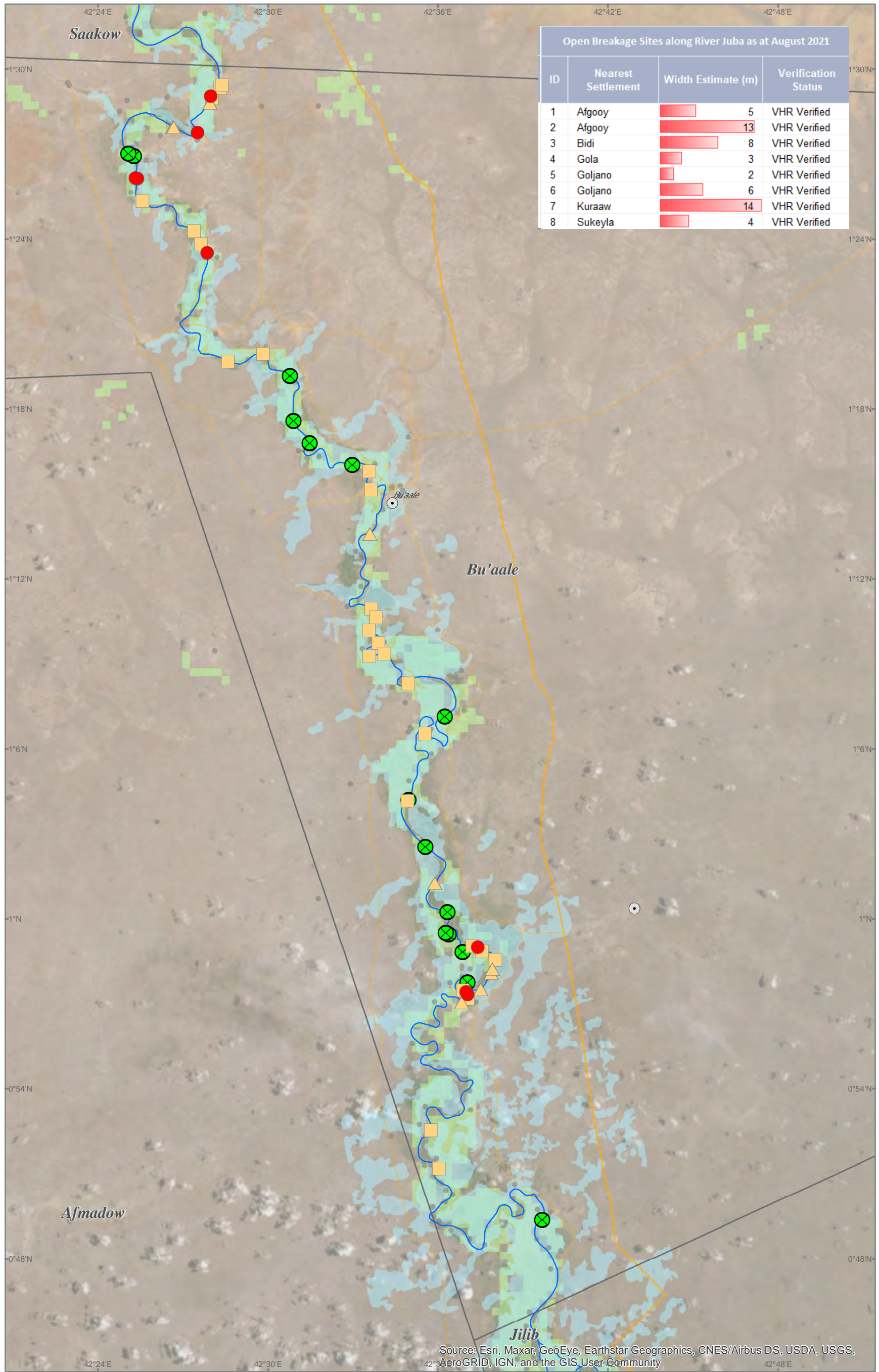
For copies of digital data please contact: [swalim@fao.org](mailto:swalim@fao.org)

Caution:  
Verified Breakage : Confirmed this season through VHR Images and/ Field Verification

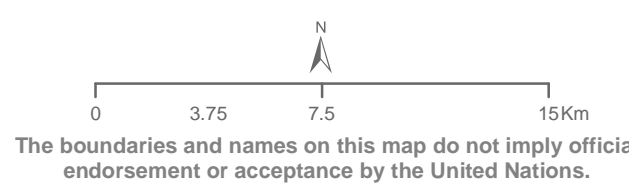
Not Verified Breakage: Confirmed in previous season but there was either cloudy or no VHR Image for assessment this season

Satellite data: WV2/WV3  
Imagery dates: Mar 2019 - Aug 2021  
Imagery resolution: 0.3 - 0.5 Meter  
Imagery source: Digital Globe, Airbus  
Other dataset: FAO-SWALIM, UNDP  
Analysis: FAO-SWALIM  
Map projection: Geographic  
Datum: WGS 84

Open Breakage Sites along River Juba as at August 2021			
ID	Nearest Settlement	Width Estimate (m)	Verification Status
1	Afgooy	5	VHR Verified
2	Afgooy	13	VHR Verified
3	Bidi	8	VHR Verified
4	Gola	3	VHR Verified
5	Goljaano	2	VHR Verified
6	Goljaano	6	VHR Verified
7	Kuraaw	14	VHR Verified
8	Sukeyla	4	VHR Verified



Source: Esri, Maxar, GeoEye, Earthstar Geographics, CNES/Airbus DS, USDA, USGS, AeroGRID, IGN, and the GIS User Community



Funding Agencies