



AFRICA - Somalia



SOMALIA - River Juba



Legend

- Open - Verified Breakage (29)
- Open - Not Verified Breakage (3)
- ▲ Overflow - Verified Breakage (6)
- ▲ Overflow - Not Verified Breakage (0)
- Potential Breakage (123)
- ▲ Potential Overflow (75)
- ⊗ Closed with Sandbag (32)
- Major Town
- ★ National Capital
- Settlement
- District Capital
- River
- Major Road
- Minor Road
- District Boundary
- Regional Boundary
- Agriculture
- Historical Flood Extent

Map Information

Map Reference:
SOM_WAT_JUBA_RIVER_BREAKAGES_SWALIM_25082021_A3

Produced by:
The Somalia Water and Land Information Management Project (SWALIM).

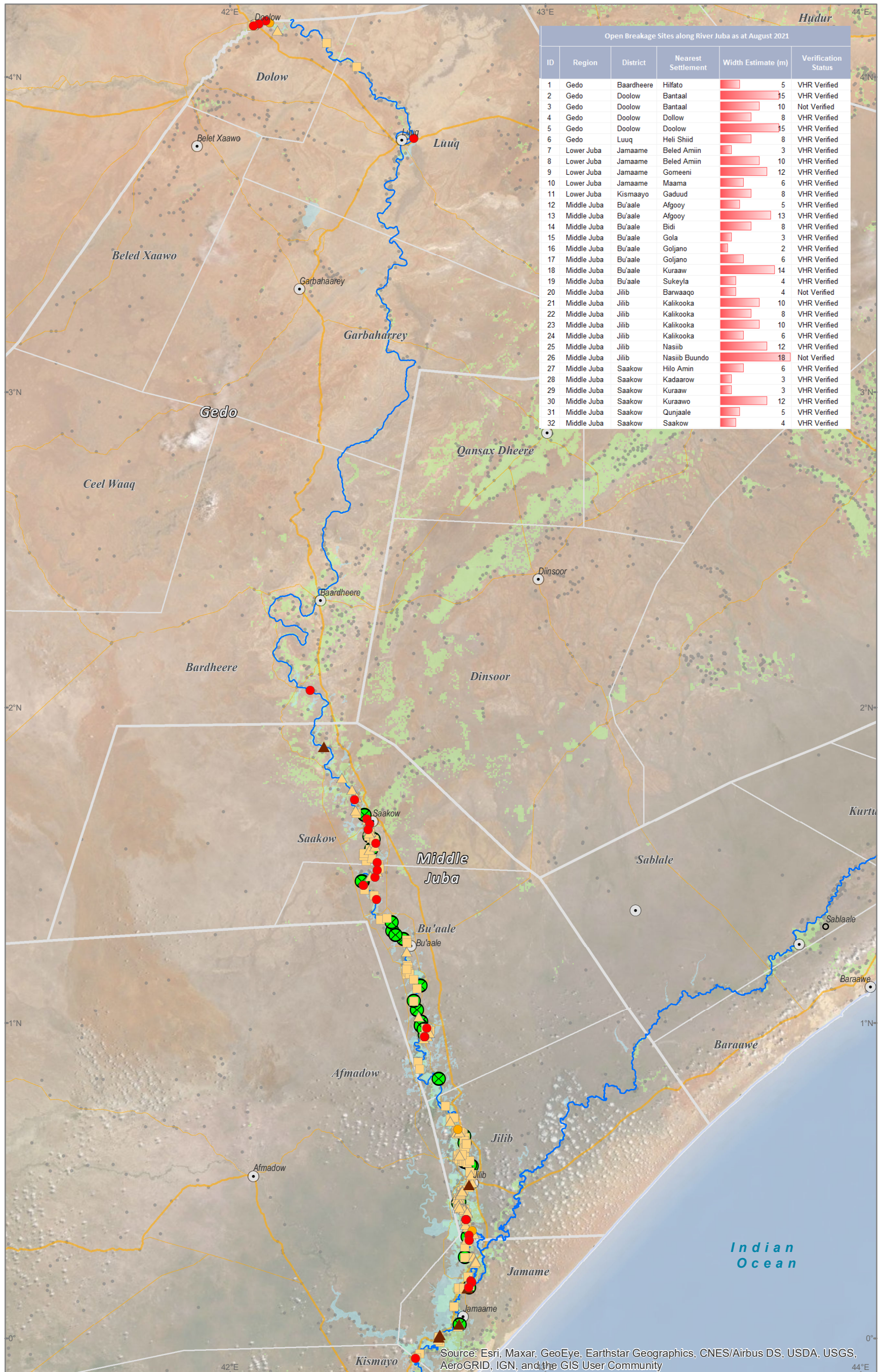
SWALIM is a multi-donor project implemented by the United Nation's Food & Agriculture Organization

For copies of digital data please contact: swalim@fao.org

Caution:
Verified Breakage : Confirmed this season through VHR Images and/ Field Verification

Not Verified Breakage: Confirmed in previous season but there was either cloudy or no VHR Image for assessment this season

Satellite data: WV2/WV3
Imagery dates: Mar 2019 - Aug 2021
Imagery resolution: 0.3 - 0.5 Meter
Imagery source: Digital Globe, Airbus
Other dataset: FAO-SWALIM, UNDP
Analysis: FAO-SWALIM
Map projection: Geographic
Datum: WGS 84



0 20 40 80 Km

The boundaries and names on this map do not imply official endorsement or acceptance by the United Nations.

