

Somalia Flood Update

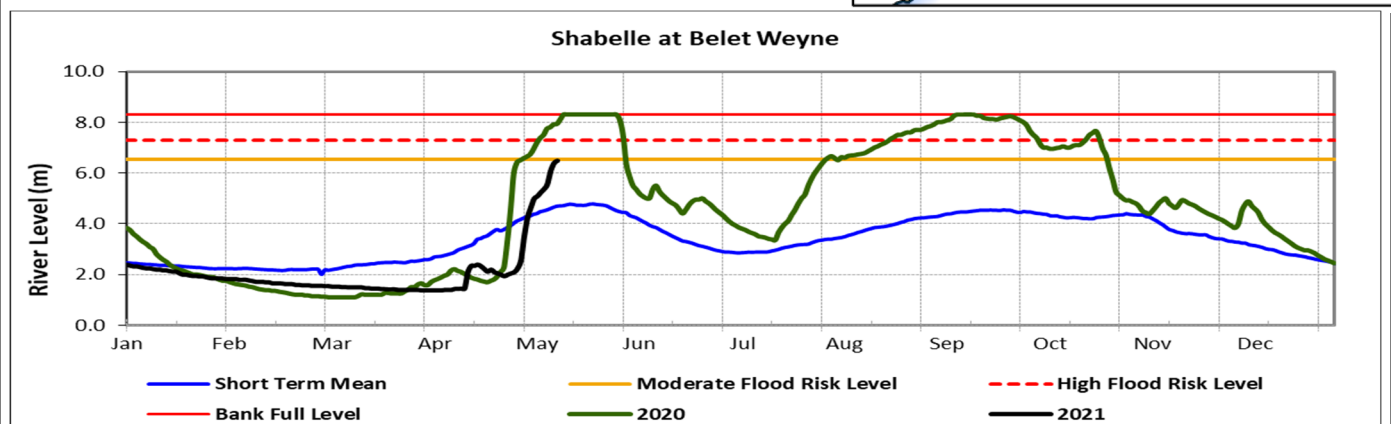
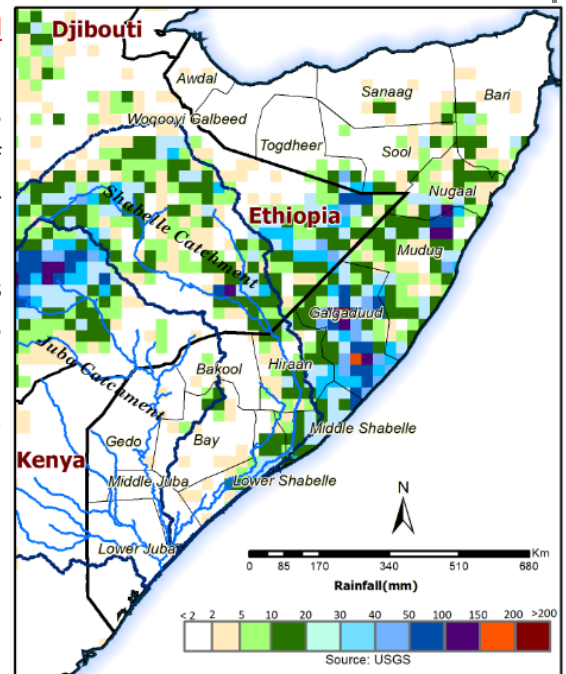
Issued: 10 May 2020

Observed levels continued to rise along the Juba and Shabelle Rivers both in Ethiopian and Somalia. However, there was a reduction of rainfall amounts in Somalia as well as in the Ethiopian highlands in the last 48 hours. The rainfall forecast for the period between 10–16 May 2021 is pointing towards moderate to heavy rains within the upper parts of the Ethiopian highlands and light to moderate rains within the Shabelle basin inside Somalia. Heavy rains are also foreseen in Galgaduud and Mudug regions between 10 and 11 May 2021 which may result to flush floods. Minimal rains are expected in Somaliland, Puntland and the southern parts of the country during the week.

Shabelle River: Flooding of high magnitude has been reported along the Shabelle River in Ethiopia and the flood wave is rapidly being transmitted to the side of Somalia with flooding being reported in parts of Hiraan region near the border with Ethiopia. Today, the river level at Belet Weyne reached the moderate flood risk level of 6.50 m. If this trend continues, the bank-full level maybe reached within seven to ten days in Belet Weyne leading to an overflow. The **high risk flood level** in Belet Weyne district will be sustained. The flood wave from Belet Weyne will be transmitted to the middle and lower reaches towards the end of the week and therefore there is a **moderate risk** of flooding in these areas during this week. The situation could be further exacerbated by weak river embankments and open river banks, which is already causing floods in Jowhar. **There is need for communities living along the entire riverine areas of the Shabelle River to take precaution.**

Juba River: Similarly, the river levels along the Juba continued to rise drastically over the last two days. At Dollow, the levels have surpassed the moderate risk level of flooding while at Luuq, the level is at 5.20 m which is 0.30 m below the moderate flood risk level. Given the rainfall forecast in the Ethiopian highlands, and the high river levels, there is a **high risk** of flooding in Dollow, Luuq and Bardheere during this week.

Map 1: Weekly rainfall forecast (10-16 May 2021)



This update is produced by the: FAO - Somalia Water and Land Information Management—SWALIM Project.
For more information please contact swalim@fao.org or visit <http://www.fao.org/swalim>

FAO SWALIM Technical Partners:



SWALIM is Managed by FAO and Currently Funded by:

