



# FLOOD UPDATE FOR JUBA AND SHABELLE RIVERS, SOMALIA

Issued: 23RD October 2023

## Receding Flash Floods and Sustained Risk of Riverine Flooding along Juba and Shabelle Rivers.

### Juba River

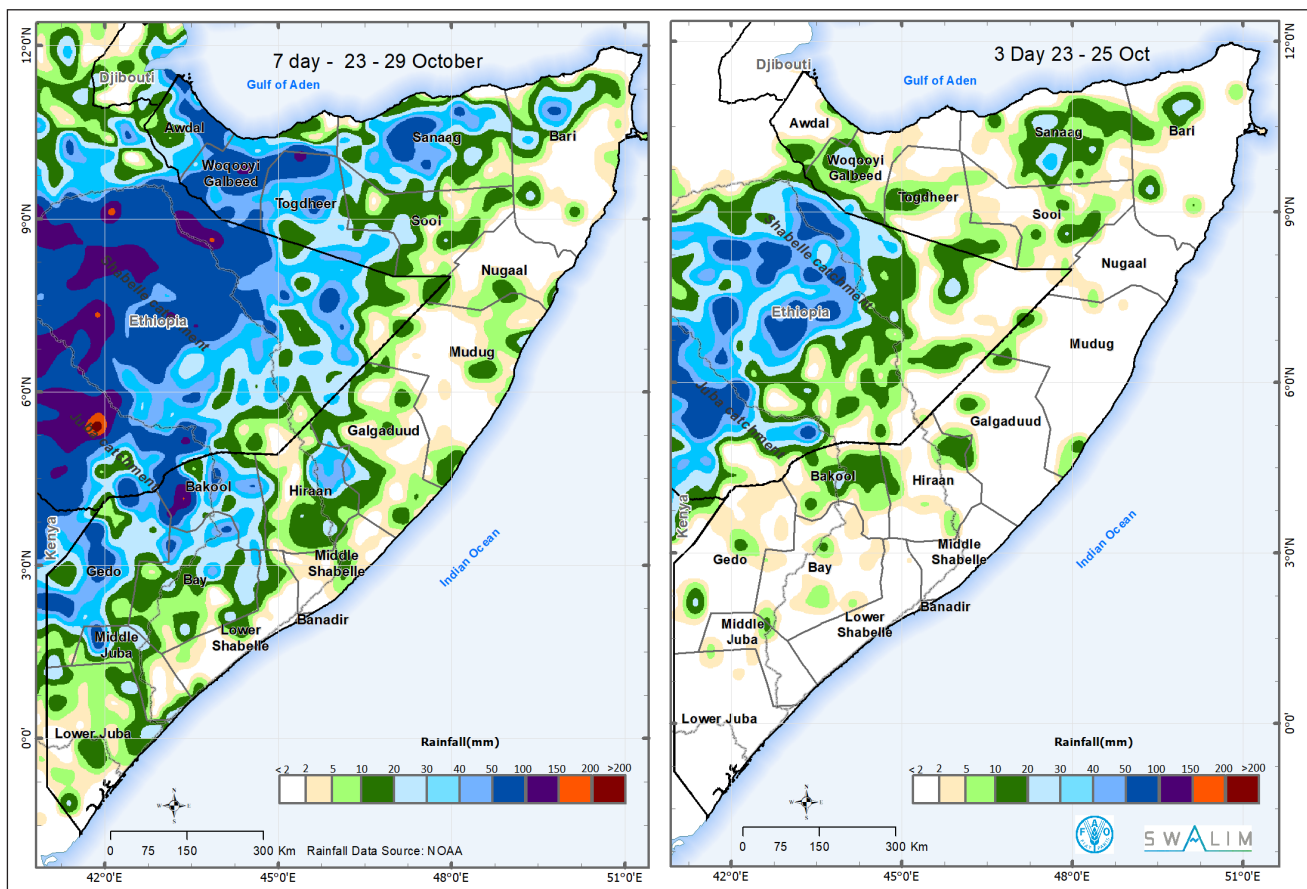
Significant fluctuations in water levels along the Juba River have been observed. The Juba River surpassed the high-risk thresholds by 10 cm at Luuq on 21st October before decreasing below moderate risk level as of today. Downstream at Bardheere Station, the water level rose from 8.00 m on 21st October to 9.00 m and crossing high-risk threshold (8.20 m) on 22nd October before receding back to 8.00 m today. The downstream flow of the flood wave has led to a 1.1 m rise in the water level at Bualle which currently poses no immediate threat of riverine flooding.

Moderate to heavy rains (50 – 100 mm) are expected over the catchment of Juba River within Gedo region and near-border areas with Ethiopia between 23rd and 29th October. The rains over the upper catchment in Ethiopian Highlands may exceed 200 mm posing high risk of riverine flooding towards the end of the forecast period. There is a **high risk of flash flooding** due to potential localized heavy rains over western parts of Bakool, central parts of Gedo, and Saakow district in Middle Juba region.

### Shabelle River

The water levels along the upper part of Shabelle River are on downward trend. On 21st October, the water level at Beletweyne (6.44 m) was only 6 cm below the moderate flood risk threshold. The levels have since dropped to 6.10 m today. The downstream flow of the flood wave has led to an increase in the water level at Bulo Burte from 4.95 m on 21st October to 5.28 m today. The water level at Jowhar station has also risen during the same time from 3.95 m to 4.28 m. These levels, at both stations, are still below riverine flood risk thresholds. Moderate rainfall (31.5 mm) led to flash floods that affected Badda Cas IDP camp interrupting livelihood activities.

Moderate rainfall of about 50 mm is expected over Shabelle River catchment within Hiraan region and near-border areas with Ethiopia. Coupled with the heavy rains recorded one week ago, the heavy rains (more than 150 mm) forecast over the Shabelle River upper catchment in Ethiopian Highlands, are likely to pose **high risk of riverine flooding** at Beletweyne towards the end of October and beginning of November 2023.



Map 1: Map 1: 7-Day (23rd – 29th October 2023) and 3-Days (23rd - 25th October 2023) cumulative rainfall forecast over Somalia.

SWALIM is a multi-donor project managed by FAO and currently funded by The European Union, SDC, FCDO, Government of France and USAID



Funded by the European Union

Schweizerische Eidgenossenschaft  
Confédération suisse  
Confederazione Svizzera  
Confederaziun svizra  
Swiss Agency for Development and Cooperation SDC

British Embassy Mogadishu

RÉPUBLIQUE FRANÇAISE  
Liberté  
Égalité  
Fraternité



USAID FROM THE AMERICAN PEOPLE