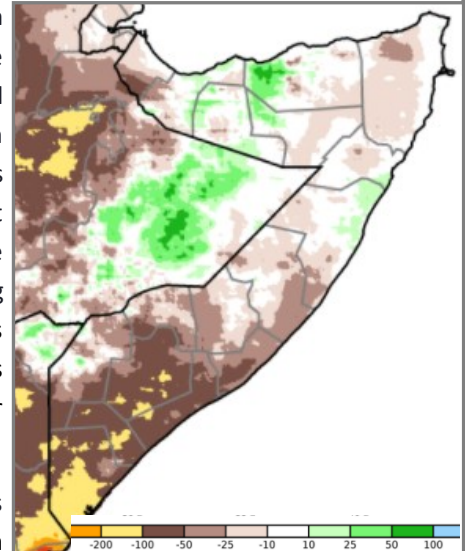


Somalia Flood Update

Issued: 28 May 2020

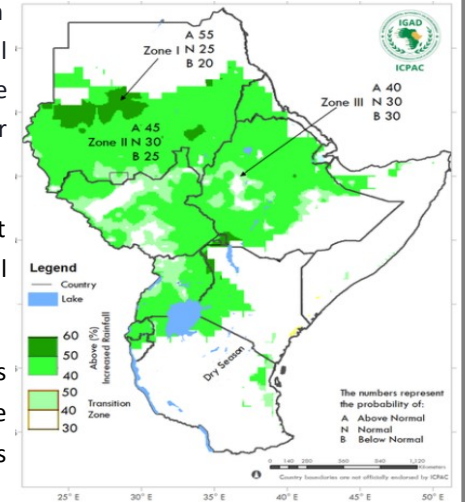
With no rains in the last two weeks and minimal rains expected the month of June, the Gu rainy season came to an early end with a poor rainfall performance in many parts of the country despite heavy rains during the last week of April and first week of May. Comparing the Gu 2021 and the long term average for the season, Map 1 shows rainfall deficits in many areas of the country, with a significant deviation from the normal. While a few pockets of Somaliland and central areas shows a positive performance, there remains a great concern in the rest parts of the country and especially the southern regions. Further, according to the IGAD Climate Prediction and Application Center (ICPAC), the Haggai season which is usually dry in many parts of the country is expected to be normal, safe for western parts of Somaliland that may record enhanced rains as seen in Map 2. With no more rains expected until the next rainy season, mild to moderate drought conditions are foreseen in the coming months. It should be noted that a large amount of rainfall in short periods of time is not effective in mitigating the drought conditions, as it underpins floods but it does not give enough time for water to infiltrate in the ground, recharging groundwater sources.

Map 1: Gu Season Anomaly (01 Mar – 10 Jun 2021); includes forecast data for May 26 to Jun 10



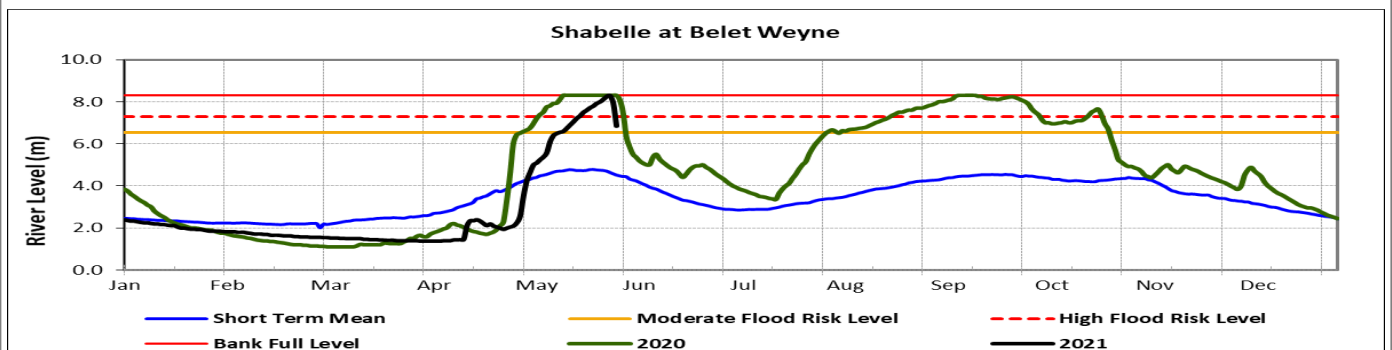
Shabelle River: Following a reduction of rainfall amounts in the Ethiopian highlands and within Somalia, compounded with the recession of the flood wave coming from Ethiopia, river levels along the Shabelle River inside Somalia have decreased drastically in the last 48 hours. The decreasing trend is expected to continue with minimal risk of flooding in Belet Weyne. However, a moderate risk of flooding will be sustained in the mid and lower reaches of the river until the end of the week. The situation could be further exacerbated by weak river embankments and open river banks, which is already causing floods in Jowhar.

Map 2: Jun–Sept rainfall forecast (Source: - ICPAC)



Juba River: The river levels along the Juba continued to decrease over the last week. The levels are currently within normal with no risk of flooding given the rainfall forecast and decreasing trend of river levels.

Users are advised that this is a forecast and at times there may be discrepancies between estimates and actual amounts of rainfall received. Information on the forecast and observed river levels is updated daily and can be found on this link: <http://frrims.faoswalim.org>



This update is produced by the: FAO - Somalia Water and Land Information Management—SWALIM Project.
For more information please contact swalim@fao.org or visit <http://www.faoswalim.org>

FAO SWALIM Technical Partners:



SWALIM is Managed by FAO and Currently Funded by:

