

## SOMALIA WEEKLY WEATHER FORECAST

Valid From 3rd to 9th April 2024

**Moderate rains are expected over some parts of Lower Juba, Gedo, Bay, Bakool, Lower Shabelle, Awdal and Woqooyi Galbeed with dry conditions likely over most parts of Galmudug and Puntland.**

### Weather Review for the Week Between 27th March and 2nd April 2024

The last week of March was marked by significant cloudiness across most parts of the country with moderate to heavy rainfall received over some places particularly in Woqooyi Galbeed, Awdal, Sanaag and Sool regions.

The following stations (*Figure 1*) received more than 1 mm of rain between 27th March and 2nd April 2024: Botor (114.0 mm), Laso Dacawo (69.0 mm), Cadaadley (24.5 mm), Aburin (14.0 mm), Bulohar (9.0 mm), Gebiley (8.0 mm), Wajaale (5.0 mm), Gacalibax (4.0 mm) and Dooxaguban (4.0 mm) in Woqooyi Galbeed region, Geerisa (48.5 mm), Borama (24.0 mm), Qulujeed (14.5 mm), Baki (12.5 mm), Zaila (12.5 mm), Taysa (11.0 mm), Magalo-cad (4.0 mm), Lughaya (3.0 mm) and Dilla (1.0 mm) in Awdal region, Erigavo (40.0 mm) in Sanaag region, Wanlaweyn (10.0 mm) in Bay region, and Xudun (4.1 mm) in Sool Region. The most intense rains were received at Botor (94 mm) in one day on 27th March 2024.

### Weather Forecast for the Week Between 3rd and 9th April 2024

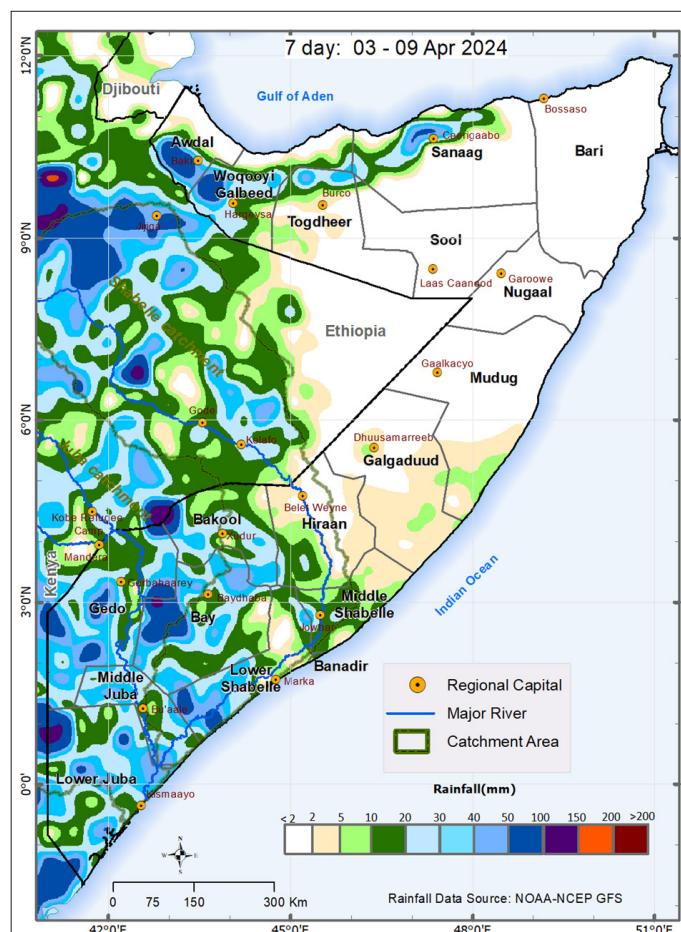
During the week from the 2nd to 8th April 2024, the onset of the Gu rains is likely to be observed with moderate rainfall expected over some places in the following regions: Lower Juba, Gedo, Bay, Bakool, Lower Shabelle, Awdal, and Woqooyi Galbeed regions. Dry conditions are likely to be observed over most parts of Galmudug and Puntland.

The cloudiness and rains in the northern parts of the country are likely to result from the north easterly winds being orographically lifted by the east-west oriented mountain ranges. The anticipated progression of the rains from Jubaland into South West is favored by the northward movement of the Inter Tropical Convergence Zone (ITCZ).

The temporal and spatial distribution of the forecast rainfall (*Map 1*) are as follows:

**Heavy cumulative rainfall between 100 mm and 150 mm** is expected over some places in the western parts of Afmadow district in Lower Juba region, the northern parts of Qansax Dheere district in Bay region, and western parts of Rab Dhuure in Bakool region. It is noteworthy that such projected heavy rains will fall within the catchment of Juba River.

**Moderate cumulative rainfall of between 50 mm and 100 mm** is forecast over most places in the western parts of Afmadow district in Lower Juba region, central parts of Baardheere district, western parts of Ceel Waaq district, eastern parts of Garbahaarey district and northern parts of Luuq district in Gedo region, northern parts of Qansax Dheere district in Bay region, western parts of Rab Dhuure district in Bakool region, and western parts of Sablaale and Baraawe districts in Lower Shabelle region. In the north, similarly moderate rains are anticipated over most places in Borama district and southern



Map 1: Cumulative rainfall forecast over Somalia between 3rd and 9th April 2024

parts of Baki district in Awdal region, Gebiley district and western parts of Hargeysa district in Woqooyi Galbeed region, and northern parts of Ceerigaabo district in Sanaag region.

**Light cumulative rainfall of less than 50 mm** is forecast over most places in Middle Juba and Middle Shabelle regions including Banadir, most of the other places in Lower Juba region including Jamaame district, most of the other places in Gedo region including Belet Xaawo and Doolow districts, most of the other places in Bay region including Baydhaba district and western parts of Buur Hakaba district, most of the other places in Bakool region including Waajid, Xudur and Tayeeglow districts and central and western parts of Cee Barde district, and most of the other places in Lower Shabelle including Kurtunwaarey and Qoryooley districts. Light rainfall is also expected over most parts of Hiraan region and coastal parts of both Ceel Dheer district in Galgaduud region and Xarardheere district in Mudug region. In the north, rainfall of similar amount is expected over most of the other places in Borama and southern parts of both Baki and Zeylac districts in Awdal region, most of the other places in Gebiley and Hargeysa districts in Woqooyi Galbeed region, and most of the other northern parts of both Ceerigaabo and Cel Afweyn districts in Sanaag region.

**Dry conditions** are likely to prevail over vast areas in the north including Bari, Sool, and Nugaal regions, Laasqoray district and central and southern parts of both Ceel Afweyn and Ceerigaabo districts in Sanaag region, Lughaye district and northern parts of both Zeylac and Baki districts in Awdal region, and Berbera district in Woqooyi Galbeed region. Dry conditions are also expected in the central parts of the country including most inland parts of Mudug region, Cabudwaaq, Cadaado, and Dhuusamareeb districts in Galgaduud region, central and northern parts of Belet Weyne district in Hiraaan region, and the areas in Afgoye-Wanla Weyn districts' boundary in Lower Shabelle.

**Temperature Forecast:**

Moderately high temperatures of above 35°C are expected over Hiraaan region, and most of the inland parts of the following regions: Lower Juba, Middle Juba, Lower Shabelle, Middle Shabelle, Galgaduud and Mudug. Such moderately high temperatures are also likely over Garbahaarey, Luuq and Doolow districts in Gedo region, and Waajid, Rab Dhuure and Tayeeglow districts in Bakool region. In the north such temperatures are likely over Garowe district in Nugal region, Iskushuban district in Bari region, Laas Anod and Xudun districts in Sool region, northern parts of Cel Afweyn district in Sanaag region, Berbera district in Woqooyi Galbeed region and northern parts of Baki district in Awdal region.

Moderate temperatures of between 30°C and 35°C are likely over most of the other places in the northern part of the country and the entire eastern coastline. In the south such moderate temperatures are expected over Bardheere, Ceel Waaq and Belet Xaawo districts in Gedo region, southern parts of Qansax Dheere district, northern parts of both Dinsoor and Baydhaba districts in Bay region, and Xudur and Cel Barde districts in Bakool region.

Temperatures less than 30°C are likely over the elevated areas in the north including places in Ceerigaabo district in Sanaag region, Qandala district in Bari region, Gebiley and Hargeisa districts in Woqooyi Galbeed and the areas in the Sheikh-Owdweyne districts' boundary in Togdheer region.

**Current River Levels**

Along the Shabelle River, the current level at Belet Weyne is below both the station Long Term Mean (LTM) and the 2023 level (Graph 1). At Bulu Burte, the current river level is above the station LTM but below what it was on the same day last year. The current level at Jowhar is equal to the station LTM and below the 2023 level. Compared to observations taken on 27th March 2024, levels recorded on 2nd April 2024 at Belet Weyne (2.05 m), at Bulu Burte (2.22 m) and at Jowhar (2.28 m) represent general steadiness.

Current levels along the Juba River are above the station LTM and below the 2023 levels at Dollow and Luuq (Graph 2). Compared to observations taken on 27th March 2024, levels recorded on 2nd April 2024 at Dollow (2.44 m) and Luuq (2.28 m) represent 22 cm and 18 cm rise in response to run off from the rainfall observed within the Juba River catchment within the country.

**Impacts Associated with the Weekly Weather Forecast**

The heavy rains that are likely to fall within some isolated areas with the middle catchments of Juba River are likely to generate sufficient run off to cause a rise in the river levels. Given that light to moderate rain is forecast over most other places in the upper catchments of Juba

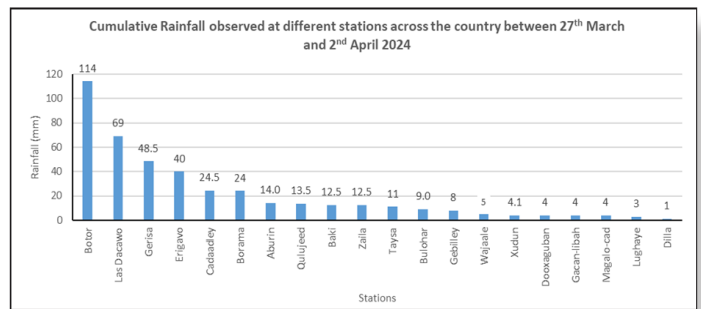
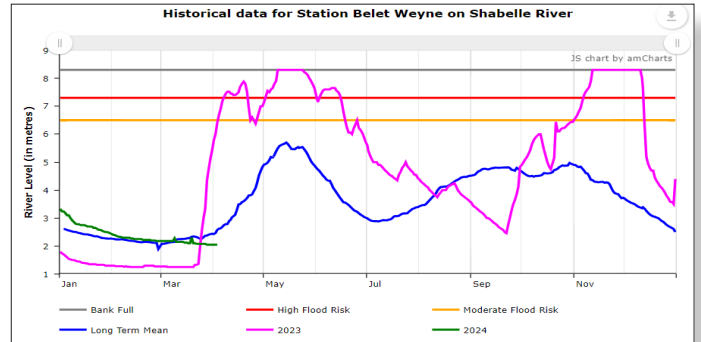
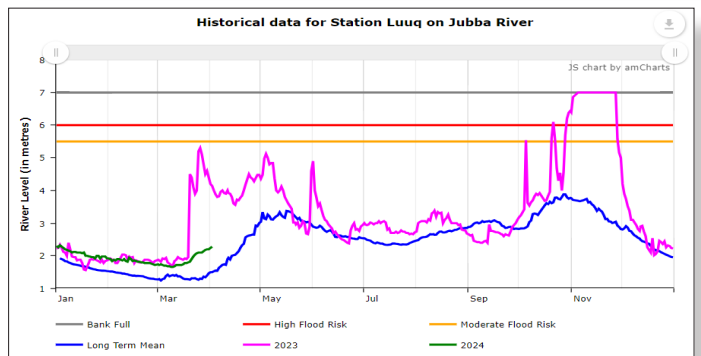


Figure 1: Stations that observed rainfall of more than 1mm between 27th Mar - 2nd Apr 2024



Graph 1: Shabelle River level at Belet Weyne Gauging Station as of 2nd April 2024



Graph 2: Juba River level at Luuq Gauging Station as of 2nd April 2024

and Shabelle Rivers, the rise in the levels is expected to be below flood risk thresholds. While cumulative rains over some places may increase in amounts, the standard lag between storm events and run off implies that noticeable peak in river levels will not be observed until the end of the forecast period. However, the known high sensitivity of the Juba River levels to rainfall events calls for day by day monitoring of storm events within its catchments.

The onset of rains over the Shabelle and Juba River catchments affirms the call for no-regret sustained and concerted effort towards the completion of any ongoing structural interventions and logistical prepositioning of other flood related anticipatory action items. It also calls for sustained provisions of land preparatory activities and inputs in time for early crop and fodder planting so as to take advantage of the prevailing soil warmth and forecast moisture conditions.

The forecast cloudiness is expected to alleviate the human heat stress associated with elevated temperatures previously observed over the southwestern parts of Somalia with improved human thermal comfort.

The forecast warm and wet airmass is likely to favor agropastoral activities over Bardheere and Ceel Waaq districts in Gedo region, Qansax Dheere district in Bay region, eastern parts of Borama district in Awdal region, and Gebiley district in Woqooyi Galbeed region.

SWALIM is a multi-donor project managed by FAO and currently funded by The European Union, SDC, FCDO, Government of France and USAID



Funded by the European Union

