



Issued: 11 December 2019

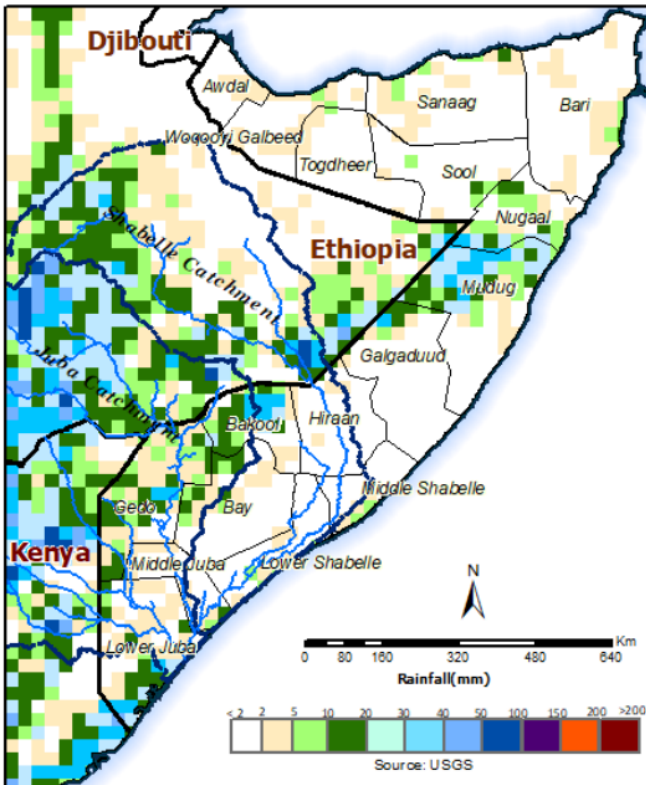
The cumulative rainfall forecast for the next three and seven days (Map 1 and 2) indicates light to moderate rainfall in parts of southern regions and within the Ethiopian highlands.

River levels along the Shabelle continued to rise and are currently very high along the entire reach. Flooding has been reported in parts of Belet Weyne district and the river is only 0.40m below the bank full level. River levels along the Juba have been fluctuating over the last week.

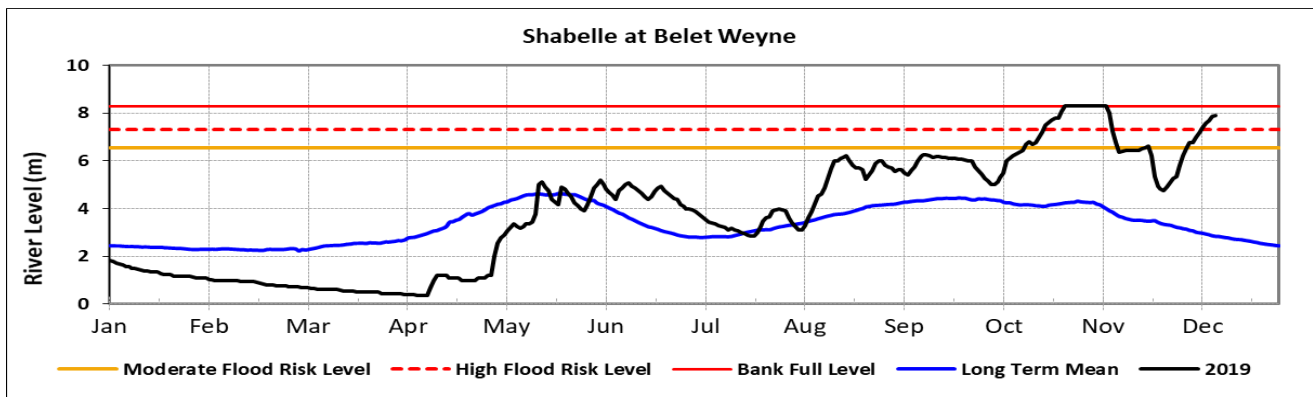
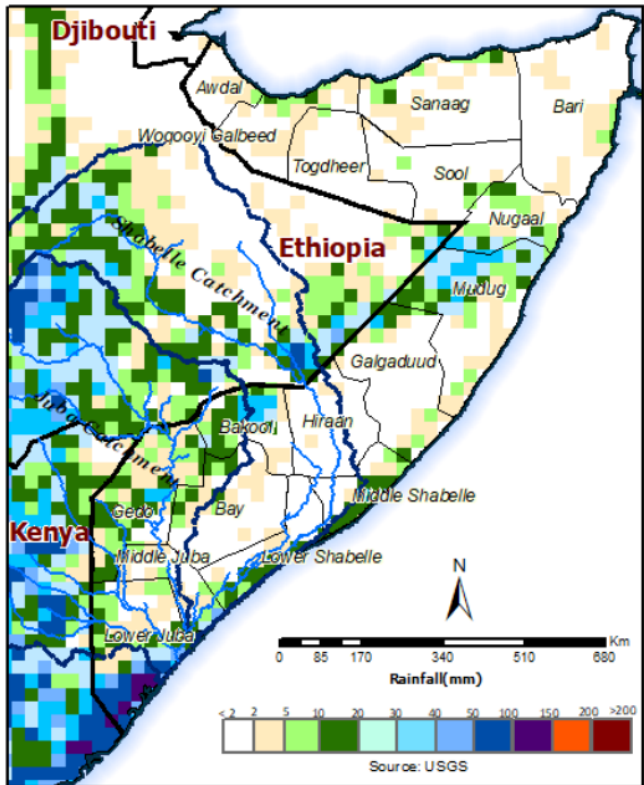
Given the rainfall forecast and current situation, there remains a **high risk** of flooding along the Shabelle and **low risk** of flooding along the Juba in the coming week.

Users are advised that this is a forecast, and at times there may be discrepancies between estimates and actual amounts of rainfall received. Information on the forecast and observed river levels are updated daily on this link: <http://frrims.faoswalim.org>

Map 1: 3 day cumulated rainfall forecast (11-13 Dec 2019)



Map 2: 7 day cumulated rainfall forecast (11-17 Dec 2019)



This update is produced by the: FAO - Somalia Water and Land Information Management—SWALIM Project.
For more information please contact swalim@fao.org or visit <http://www.faoswalim.org>

FAO SWALIM Technical Partners:



SWALIM is Managed by FAO and Currently Funded by:



Swiss Agency for Development and Cooperation SDC