

# SOMALIA WEEKLY WEATHER FORECAST

Valid From 19th to 25th April 2023

**Moderate to heavy rainfall is expected over several areas in southern Somalia with light rainfall in isolated areas in the northwest and dry conditions in central and northeastern regions**

## Weather Review for 11th to 18th April 2023

Several parts of the country received light to moderate rains over the last week with forty three (43) stations recording at least 1 mm of rainfall (Table 1). The stations that received at least 50 mm of cumulative rainfall in the last week were Salaxley (54 mm), Hargeisa (59 mm), and Dooxaguban (63 mm) in Woqooyi Galbeed region and Gacan-libah (67 mm) in Togdheer region. Relatively moderate rains were also observed at Balli Dhiddin (40 mm) in Bari region, Jowhar (41 mm) in Middle Shabelle region, Sheikh (41 mm) and Gatiiley (44 mm) in Togdheer region, and Mogadishu (45.5 mm). The rains over Gatiiley (44 mm/day), Mogadishu (45.5 mm/day) and Hargeisa (59 mm/day) were the most intense. Although cumulatively light, Dollow (28.9 mm) recorded the best temporal distribution of rain having received light rains in five (5) days during the past one week.

## Weather Forecast for 19th to 25th April 2023

According to the weekly forecast, several areas in southern Somalia are expected to receive moderate (above 50 mm) to heavy (above 100 mm) cumulative rainfall during the forecast period (Map 1). The spatial variation of the cumulative rainfall amounts is as follows:

**Heavy rainfall** of between 100 mm and 150 mm is expected in some areas of southern Somalia including Ceel Waaq district and eastern parts of Bardheere district in Gedo region, eastern parts of Diinsoor district in Bay region, northern parts of Saakow district, southern parts of Bu'aale district and northern parts of Jilib district in Middle Juba region, and western parts of Jamaame district, southeastern parts of Afmadow district, north parts of Kismaayo and most parts of Badhaadhe district in Lower Juba region. Very heavy isolated rainfall of above 150 mm is likely in some of the above areas particularly over the eastern parts of Bardheere district in Gedo region and southeastern parts of Bu'aale district in Middle Juba region.

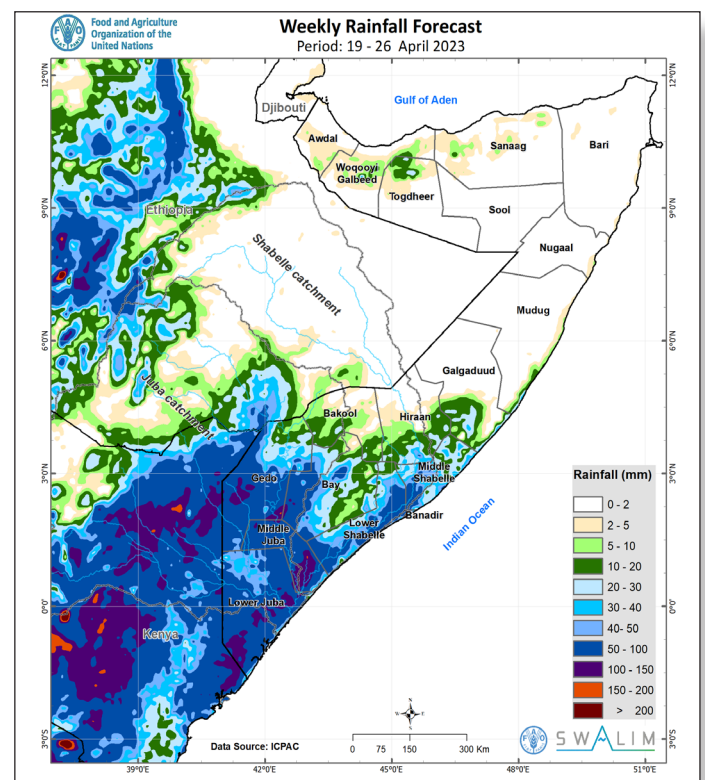
**Moderate rainfall** of between 50 mm and 100 mm is expected over Middle Juba region, several areas in central and southern Gedo, eastern, southern and western Lower Juba region, central and western parts of Bay region, western and eastern coastal parts of Lower Shabelle region, and southwestern parts of Middle Shabelle region.

**Light rains** of less than 50 mm are expected over Afmadow district in Lower Juba region, Belet Xaawo, Garbahaarey, Luuq and Dollow districts in Gedo region, several parts of Lower Shabelle, Middle Shabelle, and Bay regions, Rab Dhuure and

Waaqid districts, western parts of Xudur district and southern parts of Tayeeglow district in Bakool region, Bullo Burti district in Hiraan region, southern parts of Ceel Buur district, northern parts of Ceel Dheer district and the coastal strips of Galgaduud region and southern Mudug region. Similar moderate rains are also expected over northern parts of Hargeisa district Woqooyi Galbeed region, Sheikh district and northern parts of Owdweyne and Burco districts in Togdheer region.

**Dry conditions** are expected in central and northern parts of the country including Bari, Nugaal and Sool regions, several areas in Awdal, Sanaag, central and southern parts of Togdheer region, northern and southern parts of Woqooyi Galbeed region, and vast non-coastal parts of Mudug region.

Moderate temperatures of between 24°C and 28°C are expected in north and eastern parts of the country with cold conditions (temperatures less than 20°C) likely very isolated areas in northern Sanaag and Bari regions. Moderate temperatures of between 28°C and 32°C are expected over central and southern Somalia.



Map 1: Cumulative rainfall forecast over Somalia between 19th and 26th April 2023

## Current River Levels

The levels have been on a steady rise along Shabelle River. At Belet Weyne the rising river level crossed the high flood risk level (7.3 m) on 7th April to a peak of 7.52 m on 9th April. After a slight dip to 7.4 m on 13th April, the level rose again to 7.88 m as reported today (19th April). The level at Bulo Burti similarly rose from 1.3 m on the 22nd March to 6.44 m as of today (19th April); just 6 cm below the moderate flood risk level. After peaking at 4.85 m on 31st March, and dropping to 4.1 m on 4th April, the river level at Jowhar has since remained stable and below the moderate flood risk level (5.0 m).

The levels along Juba river generally dropped from 3.96 m at Dollow, 4.0 m at Luuq, 6.28 m at Bardheere and 5.17 m at Bualle as observed on 11th April to 3.86 m at Dollow, 3.7 m at Luuq, 5.96 m at Bardheere and 4.1 m at Bualle as of today (19th April). The fluctuations in these river levels during the past week were below moderate flood risk threshold for the respective stations.

Figures 1 and 2 show the current river levels against the Short Term Mean and 2022 levels for Luuq and Belet Weyne stations respectively.

## Impacts Associated with the Weekly Weather Forecast

Currently, there is a high risk of flooding along the Shabelle River at Belet Weyne town and its surroundings. Population living at the flood prone areas of Beletweyne and downstream reaches should therefore take precaution. Given that the river level at Bulo Burti is just 6 cm below the threshold, there is a likelihood of moderate flood risk. Although the levels along Juba River are below flood risk thresholds, the levels are expected to rise in the coming days, given the forecast very heavy rains forecast (heavier than 150 mm) within the southern parts of Somalia particularly Gedo and Middle Juba regions, together with moderate rains forecasted over Ethiopian highlands (Map 1).

These rains may lead to increased run off both upstream and downstream which will likely cause a sudden rise in the currently stable river levels along Juba River. Although the river level is way above the high risk of flooding along the Shabelle River at Belet Weyne, dry conditions forecast over its catchment in Ethiopia will likely lead to less run off and decrease in the levels.

The moderate to heavy rainfall expected over the central and southern parts of the country is likely to lead to substantial recharge of surface water sources and vegetation regeneration which is important for human and livestock survival. The forecast heavy rains are favorable for planting in Lower Juba and Middle Juba regions, late planting in Gedo region. However, high temperatures (28 °C to 32°C) that are forecast to succeed the forecast wet conditions may lead to rapid evaporation thereby leaving no soil water to support vegetation regeneration.

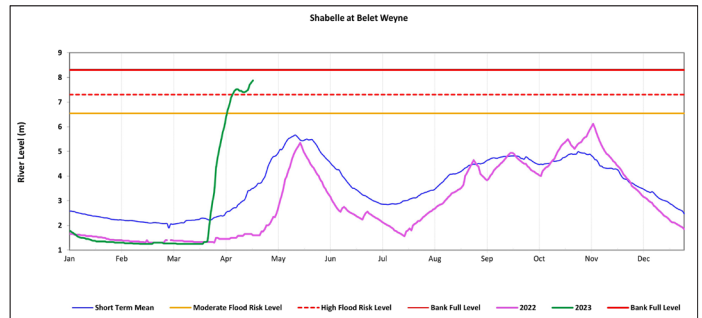


Figure 1: Shabelle river level at Belet Weyne gauging station

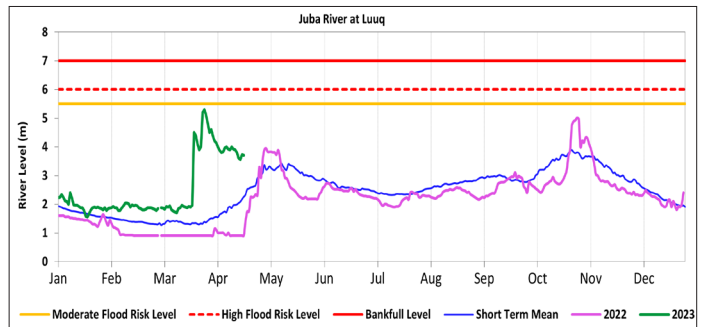


Figure 2: Juba river level at Luuq gauging station

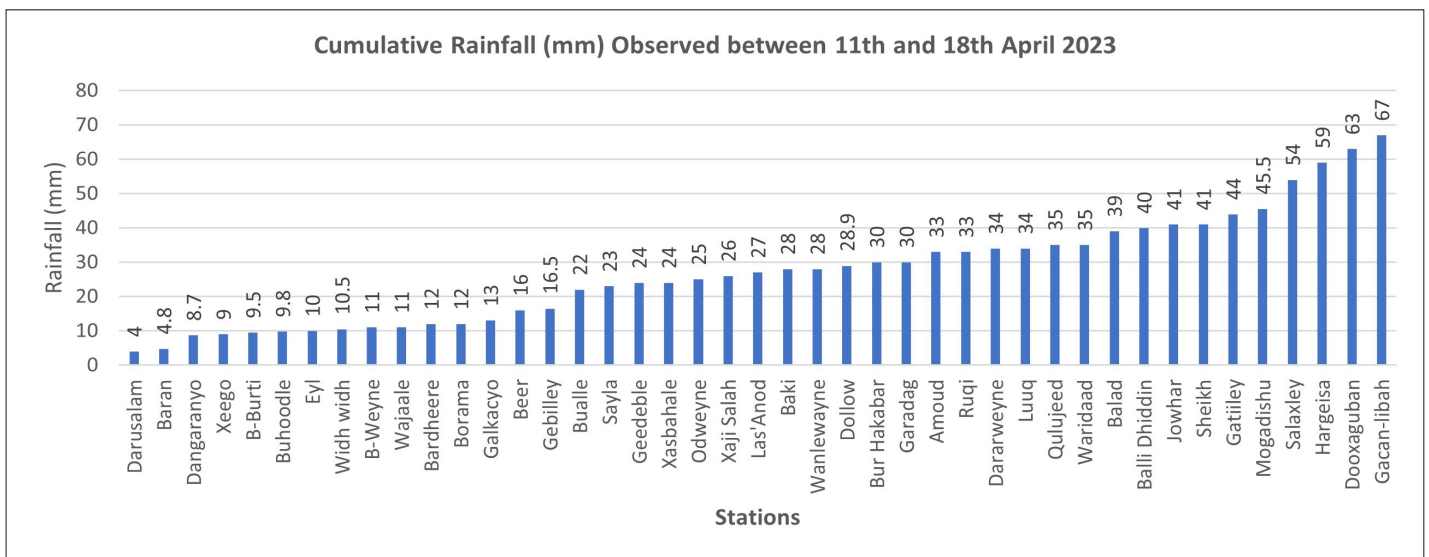


Table 1: Cumulative rainfall (mm) observed over different stations between 11th and 18th April 2023 across Somalia

SWALIM is a multi-donor project managed by FAO and currently funded by The European Union, SDC, Government of France and USAID



Funded by  
the European Union

Schweizerische Eidgenossenschaft  
Confédération suisse  
Confederazione Svizzera  
Confederaziun svizra

Swiss Agency for Development  
and Cooperation SDC

RÉPUBLIQUE  
FRANÇAISE  
Liberté  
Égalité  
Fraternité



USAID  
FROM THE AMERICAN PEOPLE