

SOMALIA WEEKLY WEATHER FORECAST

Valid From 22nd to 28th November 2023

Heavy rainfall expected over Middle Shabelle; moderate rainfall likely over coastal parts of Galgaduud, Lower Shebelle and Lower Juba with chances of isolated light rainfall in parts of Gedo and Bay regions; dry conditions in the northern parts of the country.

Review of the Weather for the Period 14th to 21st November 2023

Over the past week, numerous weather stations predominantly concentrated in the south and central regions of Somalia. Reported substantial rainfall. Gedo region in particular, experienced exceptionally intense rainfall, with Bardheere recording a remarkable 416 mm over a six-day period. The highest daily amount at this station was 108 mm on November 16th. Luuq also witnessed significant precipitation, registering 179 mm over five days, with the peak daily amount of 125 mm recorded on November 19th. Several other stations reported rainfall exceeding 100 mm, including Bualle with 214.5 mm (7 days) in Middle Juba region, Hudur with 168.5 mm (6 days) and El Barde with 167.5 mm (6 days) in Bakool region, Waridaad with 143 mm (2 days) in Sool region, Dinsoor with 134.1 mm (6 days) and Baidoa with 128.5 mm (6 days) in Bay region, Mataban with 122.4

mm (5 days) and Bulo Burte with 109.7 mm (4 days) in Hiraan region, Laas Dawaco with 122 mm (4 days) and Bulohar with 110 mm (4 days) in Woqooyi Galbeed region, Galdogob with 112.9 mm (4 days) in Mudug region, and Balli Dhiddin with 108.3 mm (3 days) in Bari region.

For the last three weeks, moderate to heavy rains have sustained bankful levels along Juba River causing widespread flooding. Similarly, the Shabelle River, spanning from Belet Weyne to Bulo Burti, is experiencing bankful water levels, contributing to extensive flooding. Many areas within the river catchment zone have become inaccessible, prompting communities to evacuate and seek refuge on higher ground. Areas downstream of Bulo Burti are at high risk of flooding, as the flood wave move downstream.

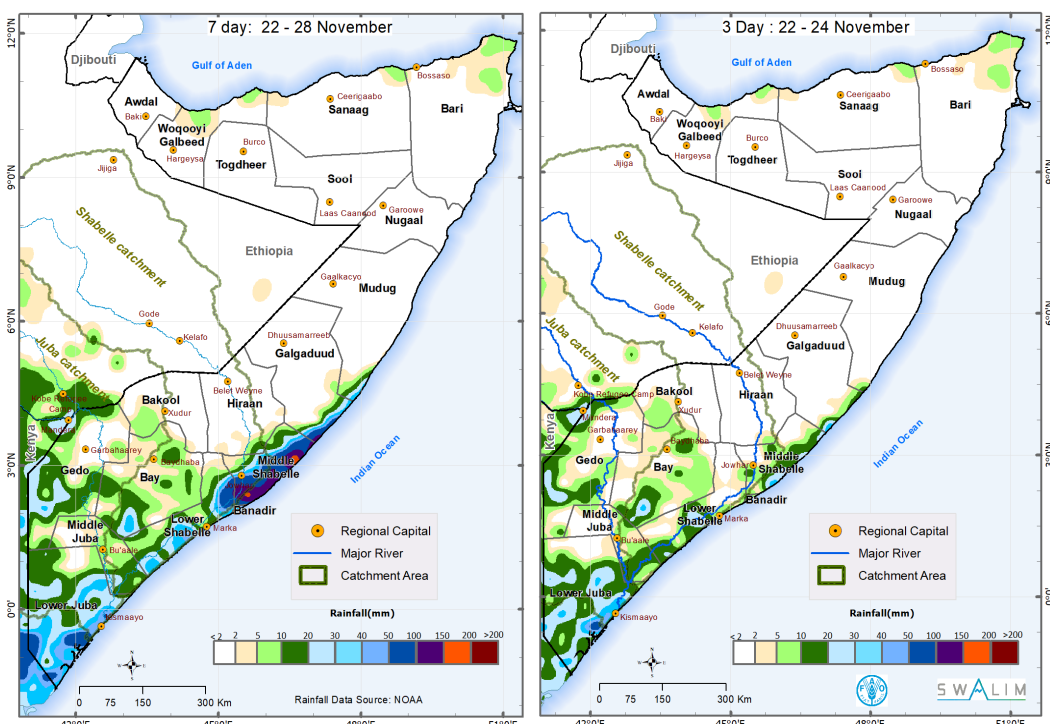
Forecast of the Weather for the Period 22nd to 28th November 2023

According to the coming week's weather forecast, substantial rainfall is expected over Middle Shabelle region and the coastal areas of Galgaduud region. Additionally, the forecast indicates a range from moderate to heavy rainfall across Lower Juba, Middle Juba, Gedo, Lower Shabelle, and Bay regions. Dry conditions are anticipated throughout the rest of the country, with isolated chances of light rainfall over Bakool, Bari, Sanaag, and Woqooyi Galbeed regions.

Light rainfall of below 50 mm is expected over Waajid district in Bakool, several areas in Lower Juba region, Middle Juba, Gedo, Bay, and Lower Shabelle regions. Similar conditions are likely in Caluula and Iskushuban districts in Bari region, and coastal parts of both Laasqoray and Berbera districts.

Heavy rainfall of between 100 mm and 150 mm is expected over coastal areas of Cadale, Balcad and Adan Yabaal districts in Middle Shabelle region. Similarly heavy rainfall is likely over Ceel Dheer district in Galgaduud region.

Moderate rainfall of between 50 mm and 100 mm is forecast over inland parts of Cadale, Balcad and Adan Yabaal districts in Middle Shabelle region and Kismayo district in Lower Juba region.



Map 1: 7-Days and 3-Days Cumulative rainfall forecast over Somalia.

Dry conditions are expected over areas around Saakow district in Middle Juba, Garbahaarey and Luuq districts in Gedo region, scattered areas of Bay region, extensive parts of Bakool, Hiraan, Galgaduud regions. Similar dry weather patterns are also expected in extensive parts of the entire northern regions of the country.

Temperature Forecast: The current forecast indicates the likelihood of high temperatures ranging from 35°C to 45°C over extensive parts of the south, central and northeastern parts of the country. Milder temperatures ranging between 20°C and 25°C are anticipated over Awdal, Woqooyi Galbeed, Togdheer and Sanaag regions and Inland parts of Bari region.

Current River Levels

Due to the substantial and continuous rainfall over the Juba River catchment, the entire stretch from Dollow to Bualle is currently experiencing elevated water levels beyond bankful capacity. This persistent condition has led to severe and destructive flooding in many parts along the river.

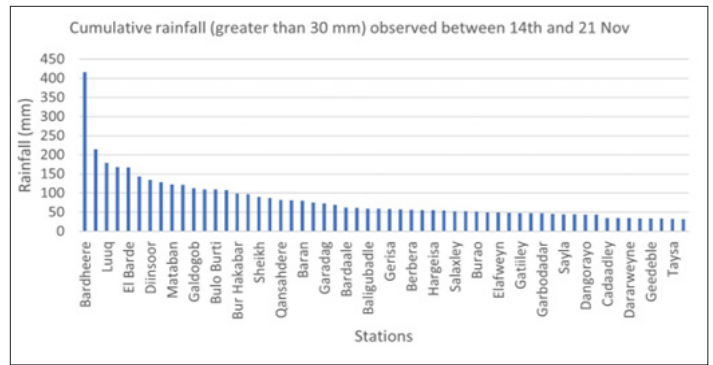
Simultaneously, water levels along the Shabelle River have been steadily increasing. As of today, November 22, 2023, observations indicate that river levels at BeletWeyne and Bulo Burti have reached bankful levels, with riverbank overflows resulting to widespread flooding and massive displacement of populations.

Downstream at Jowhar, water levels are rising, with today's level only 50 cm below the bankful. This situation places the area under high risk, emphasizing the urgency for heightened vigilance and preparedness measures to mitigate potential hazards associated with the rising water levels.

Figures 1 and 2 show the current river levels against the Short Term Mean and 2022 levels for Belet Weyne and Luuq stations respectively.

Impacts Associated with the Weekly Weather Forecast

Although dry conditions with chances of light rainfall is forecast over the Ethiopian highlands and the Hiraan region, the sustained bankful river level along the Shabelle River is expected due to the extensive spread of floodwaters upstream of Belet Weyne as seen in the [BeletWeyne Flood Impact Map](#). Similarly, the Juba River is anticipated to maintain its current high levels, influenced by the expected rainfall over the catchment in the coming week, even though the magnitude is lower compared to last week. These ongoing floods are causing significant losses to communities. The risk of submerging more agricultural and rangeland areas poses a threat, leading to the destruction of crops and the loss of livelihoods for the affected communities. Additionally, the floodwaters increase the likelihood of spreading waterborne diseases, emphasizing the need for heightened health precautions.



Graph 1: Cumulative rainfall (mm) at different stations between 14th and 21st November 2023

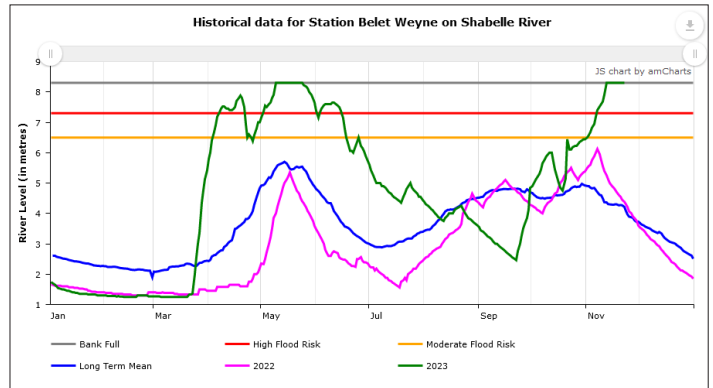


Figure 1: Shabelle river level at Belet Weyne gauging station as on 22nd November 2023

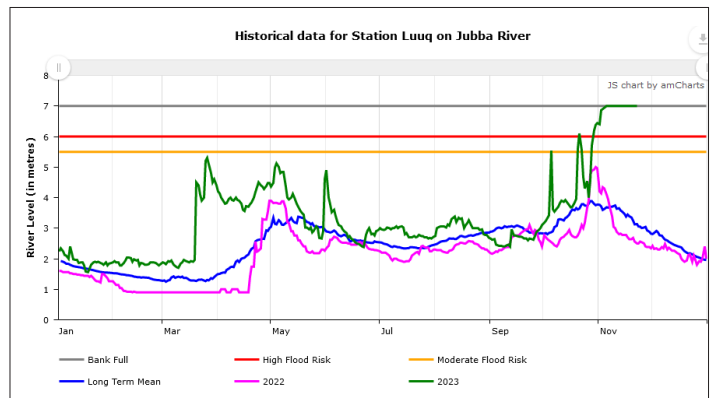


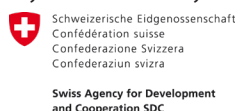
Figure 2: Juba River level at Luuq gauging station as on 22nd November 2023

Dry and warm conditions are expected in many parts of Somaliland and Puntland, with significant evapotranspiration, except in the Sanaag and Woqooyi Galbeed regions. On the positive side, the observed and forecasted rains, coupled with warm soil conditions are highly favorable for crop, pasture, and fodder production in the agropastoral livelihoods in the southern and central parts of the country.

SWALIM is a multi-donor project managed by FAO and currently funded by The European Union, SDC, FCDO, Government of France and USAID



Funded by the European Union



USAID FROM THE AMERICAN PEOPLE