

The last 2 weeks have been characterized by a reduction of rains across Somalia and the Ethiopian highlands. Many stations did not record any rainfall within that period. This raised a lot of concerns as an early cessation of the Deyr season would make worse the drought conditions currently experienced in many parts of the country.

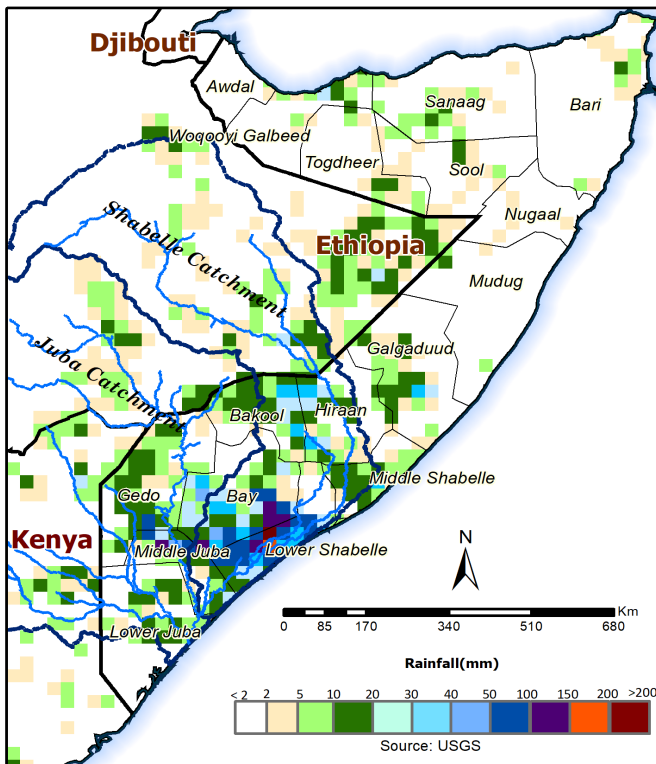
The rainfall forecast for the next one week is however promising, especially in the southern regions. The 3—7 days cumulative rainfall forecast (Maps 1 and 2) shows moderate rains spread across the southern regions of the country, with parts of Bay and Lower Shabelle receiving heavy rainfall. The central and northern regions are expected to receive scattered light to moderate rains for the same period. Inside Ethiopia, the Juba and Shabelle catchment, where most of flow in the two rivers originate, moderate to heavy rainfall is foreseen towards the end of the week.

Along the Puntland coast there has been fears of experiencing a cyclone within today. Recent updates however indicate that the area of convection has since dissipated, reducing the possibility of a significant tropical cyclone developing. The coastal areas of Bari may however experience strong winds and showers in the next few days, but at a much lower magnitude compared to a tropical cyclone.

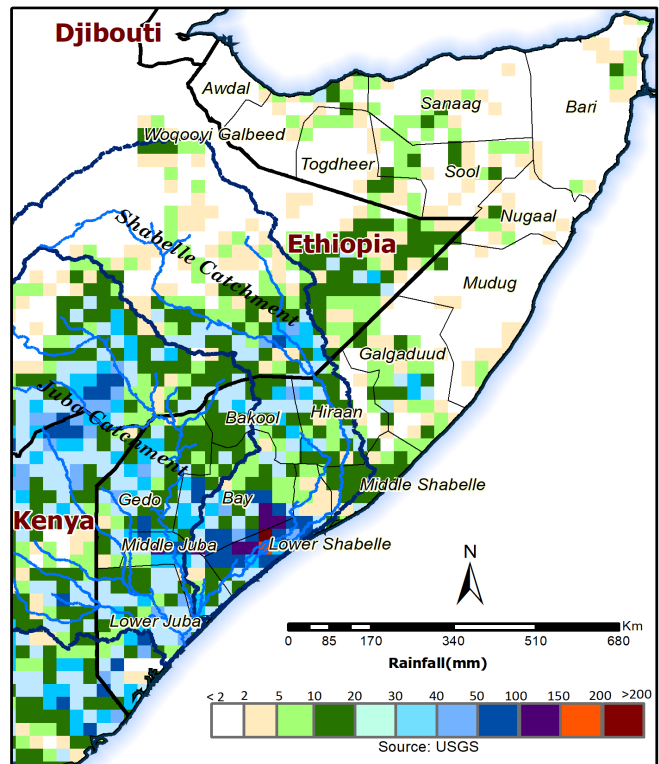
River levels along Juba and Shabelle remains low, and within normal for this time of the year.

Users are advised that this is a forecast and at times there may be discrepancies between estimates and actual amounts of rainfall received. Information on the forecast and observed river levels is updated daily and can be found on this link: <http://frrims.faoswalim.org>.

Map 1: 3 day cumulated rainfall forecast (24 - 26 Nov 2021)



Map 2: 7 day cumulated rainfall forecast (24 Nov - 30 Nov 2021)



This update is produced by the: FAO - Somalia Water and Land Information Management—SWALIM Project.
For more information please contact swalim@fao.org or visit <http://www.faoswalim.org>

FAO SWALIM Technical Partners:



SWALIM is Managed by FAO and Currently Funded by:

